

Welcome to PokeFarmer

Special Thanks To

CAcove - Main Author
Black Widow – Writing Contributor for Logic Settings
River – Reviewing and helping edit
HatchingEgg – Making the time to approve this guide for distribution

Please Note This Guide Will Be Updated As Major Changes Take Place To PokeFarmer

Below is a guide that will help you get started and tell you all the basics you need to know about starting your adventure with PokeFarmer:

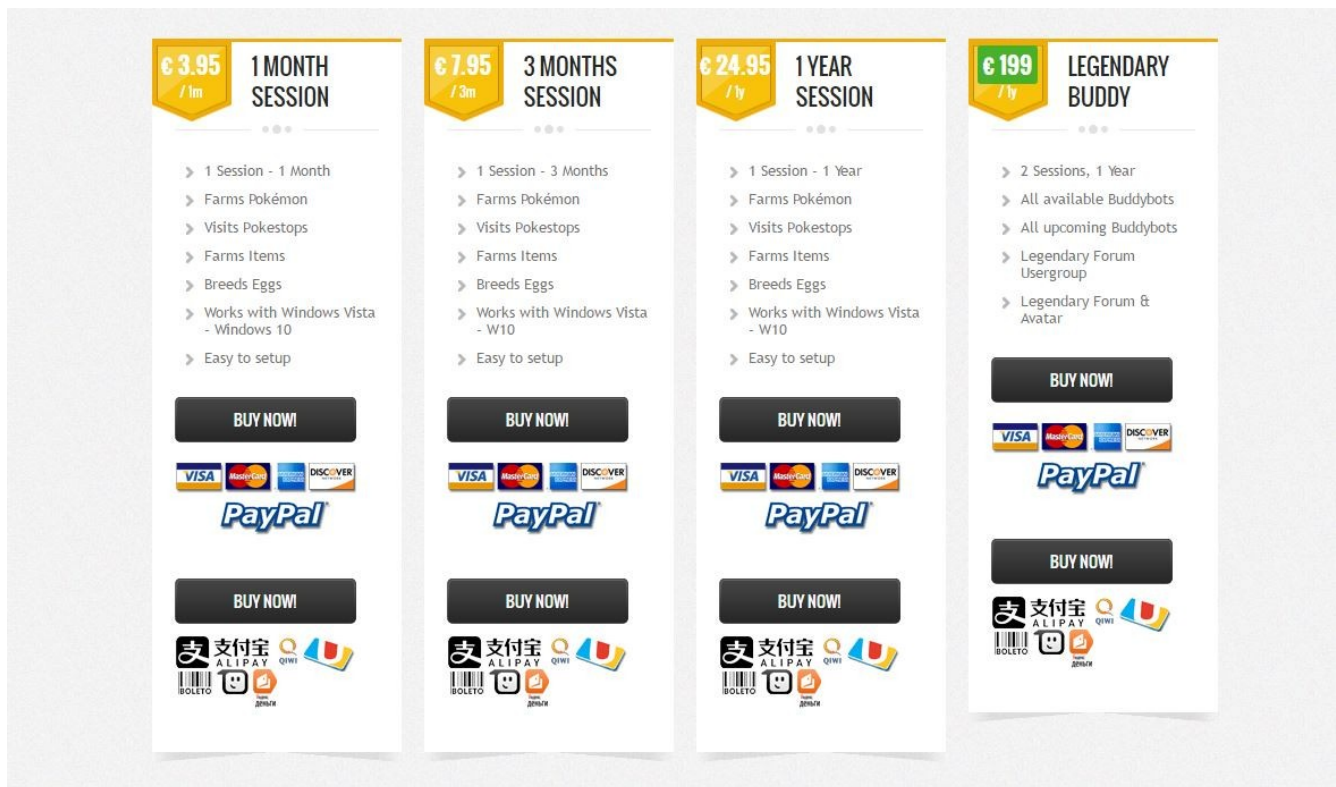
First of all we would like to welcome you to PokeFarmer and our community. We are thrilled that you have chosen to place your faith in us to get those pesky hard to get Pokemon.

Lets start at the beginning shall we?

Purchasing and downloading:

The first thing you need to do is figure out a few things like, how long would you like your first key to last before buying a new one, and how many accounts you want to be able to run at the same time with your key which is easy to resolve you really only have 2 options now. 1 account at a time or 2 accounts at a time per key. This is called a session on the purchase page. This does not mean you cant purchase multiple keys and run multiple accounts with PF just that you cant run more than one at the same time with the same key. Once you have decided that you will go to our main purchase site:

<https://www.pokefarmer.com/>



After going there you can select the frequency of key purchases and pay for your product. From there you select your payment method, please refer to the site for up to date payment methods.

Once you have completed your transaction, assuming it went through without any issues and as long as you did not use a VPN while making your purchase, you should receive your key in an email within a few minutes after the confirmation email. However sometimes it can take up to about 2-4 hours to receive it, be sure to check your junk mail. In the event its taking longer than usual, you can log on to <https://na.buddyauth.com/> and check the status of the key or if its in there yet providing you are using the same email address used for payment:

Buddy Auth Portal

Welcome [Log Off] - [Change Password]

Region: North America

HOMESESSIONSKEYSATTACH KEYUPGRADES

Welcome to the Buddy Auth Portal!

Please select an area from the tabs above to manage your sessions, keys, and other info.

Downloads

[Check latest versions of our products](#)

Buddy Status

[Check the status of Buddy services](#)

Support Forums

[The Buddy Forums](#)

HOMESESSIONSKEYSATTACH KEYUPGRADES

Warning: Disabling Tripwire is potentially dangerous and leaves your account vulnerable. We recommend you do NOT disable Tripwire unless you are fully aware of what you are doing. For more information about Tripwire, see [our Wiki article on it.](#)

Keys

ACTIVE

Purchased	Allowed Days	Allowed Sessions	Key	Expires	Type	Last Region	Actions
9/24/2016 3:56:44 AM				8/2/2025 8:12:47 AM		North America	Disable Tripwire
2/10/2016 11:49:44 PM				12/20/2025 4:52:59 AM		North America	Disable Tripwire
11/25/2016 5:35:52 AM	92	1		3/17/2017 5:41:04 AM	Pokefarmer	North America	Disable Tripwire
12/17/2016 5:23:29 PM	92	1		3/18/2017 9:25:33 PM	Lazymon20	North America	Disable Tripwire

UNUSED / INACTIVE

Purchased	Allowed Days	Allowed Sessions	Key	Expires	Type	Last Region	Actions
8/2/2016 5:33:42 PM	32	1		11/2/2016 5:37:44 PM	Pokefarmer	North America	Disable Tripwire
8/3/2016 12:12:55 AM	32	1		11/3/2016 12:15:22 AM	Pokefarmer	North America	Disable Tripwire
8/3/2016 1:11:52 AM	32	1		11/3/2016 1:19:00 AM	Pokefarmer	North America	Disable Tripwire
12/4/2016 6:09:01 AM	32	1		1/5/2017 6:12:16 AM	Demonbuddy	North America	Disable Tripwire

In the event that the email has not gone through you can indeed email support at: support@thebuddyforum.com to get assistance, as they are the only ones authorized to deal with purchases and keys. This means you should **NOT** post in the forums asking for help on it as you will be referred to the email support and you should **NOT** join discord and ask there, as we are unable to help.

Now that we have that all set and you have your PokeFarmer key, you need to make sure you have downloaded PokeFarmer from the site.

January 05, 2017

FacebookTwitterGoogle PlusLanguage: English

POKE FARMER

HOME

DOWNLOAD

FEATURES

MANUAL

COMMUNITY

SUPPORT

CONTACT

POKEFARMER FOR POKÉMON GO

Farms Pokémon, gathers items, visits pokestops

get the Pokefarmer Full 1 Month Access

for only 3.95 EUR

VIEW PLANS & FEATURES >>

BUY NOW >>

✓ Farms Pokémon

✓ Visits Pokestops

✓ Farms Items

✓ Breeds Eggs

WE HAVE OVER 250,000 REGISTERED USERS AND OVER 2.0 MILLION POSTS

OUR FAST AND ENTHUSIASTIC COMMUNITY IS THE EASY WAY TO GET ANY HELP & SUPPORT YOU NEED

€ 3.95 / 1m 1 MONTH SESSION

€ 7.95 / 3m 3 MONTHS SESSION

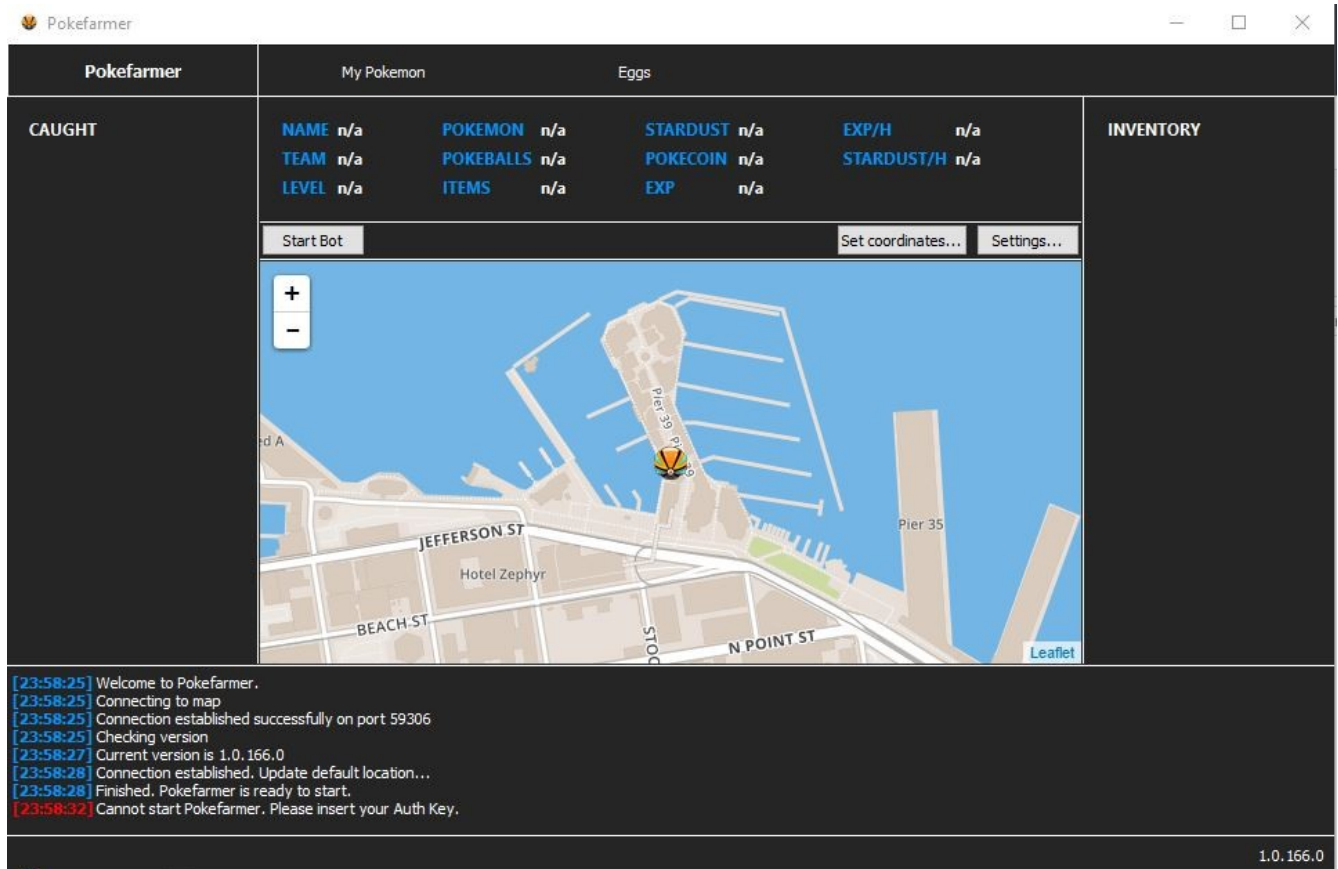
€ 24.95 / 1y 1 YEAR SESSION

€ 199 / 1y LEGENDARY BUDDY

Setting Up PokeFarmer:

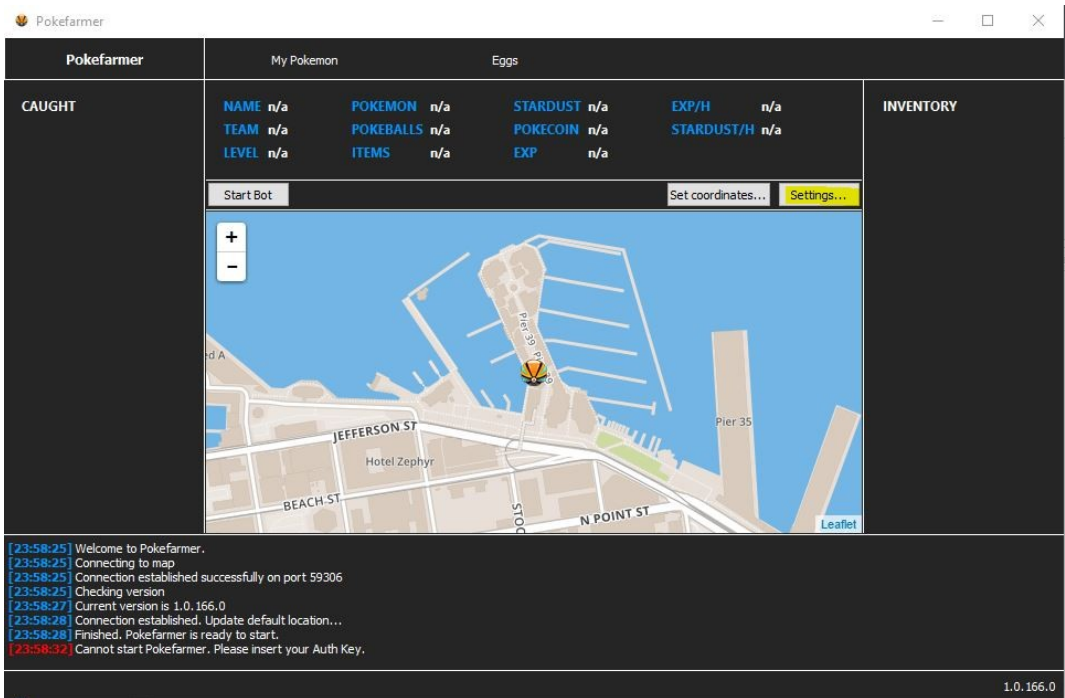
Congratulations, you now have PokeFarmer on your computer, now the big question you might be asking is, what do I do now? Lets move onto that step.

Once you have downloaded and unzipped PF (PokeFarmer) you are going to open the pokefarmer.exe file and wait for it to open up. (You might have to give it permissions with Windows and even tell your firewall/anti-virus that it is ok to run it as it can cause a false positive flag for being unsafe, don't worry we assure you the program is safe and will not harm your computer). Once PF has successfully opened you will be greeted with the following:

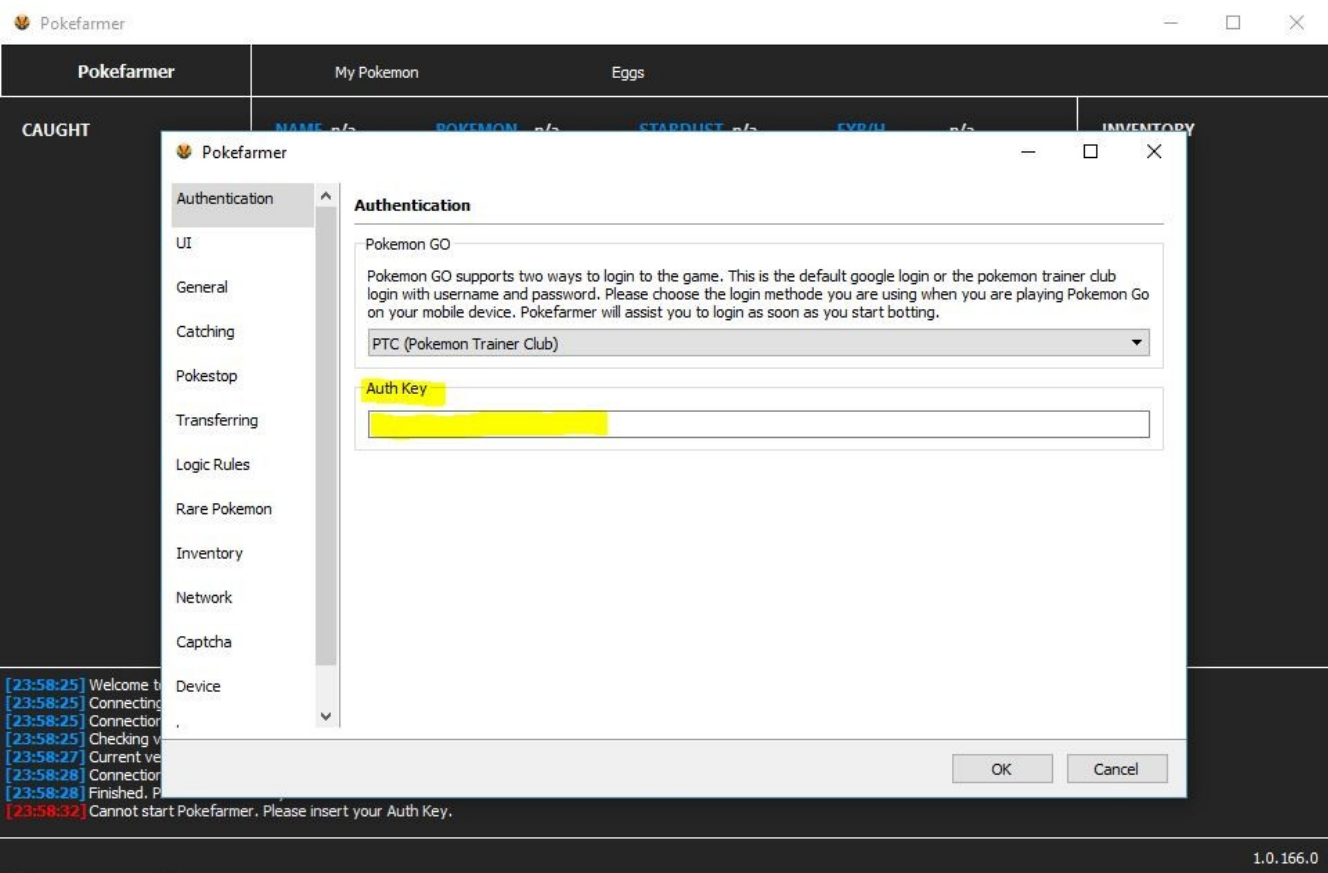


Great we are almost halfway there, before you start you might see yourself set to a different point on the globe, it is absolutely important that you select the area you want to start botting in by scrolling out on your mouse finding the area, scrolling in and then clicking on the map. Just like I did in the picture above.

Now we need to review a few settings and make sure you have everything set the way you want it. So lets take a look at those settings together and review each and every one of them. Click the settings button highlighted in the image below:

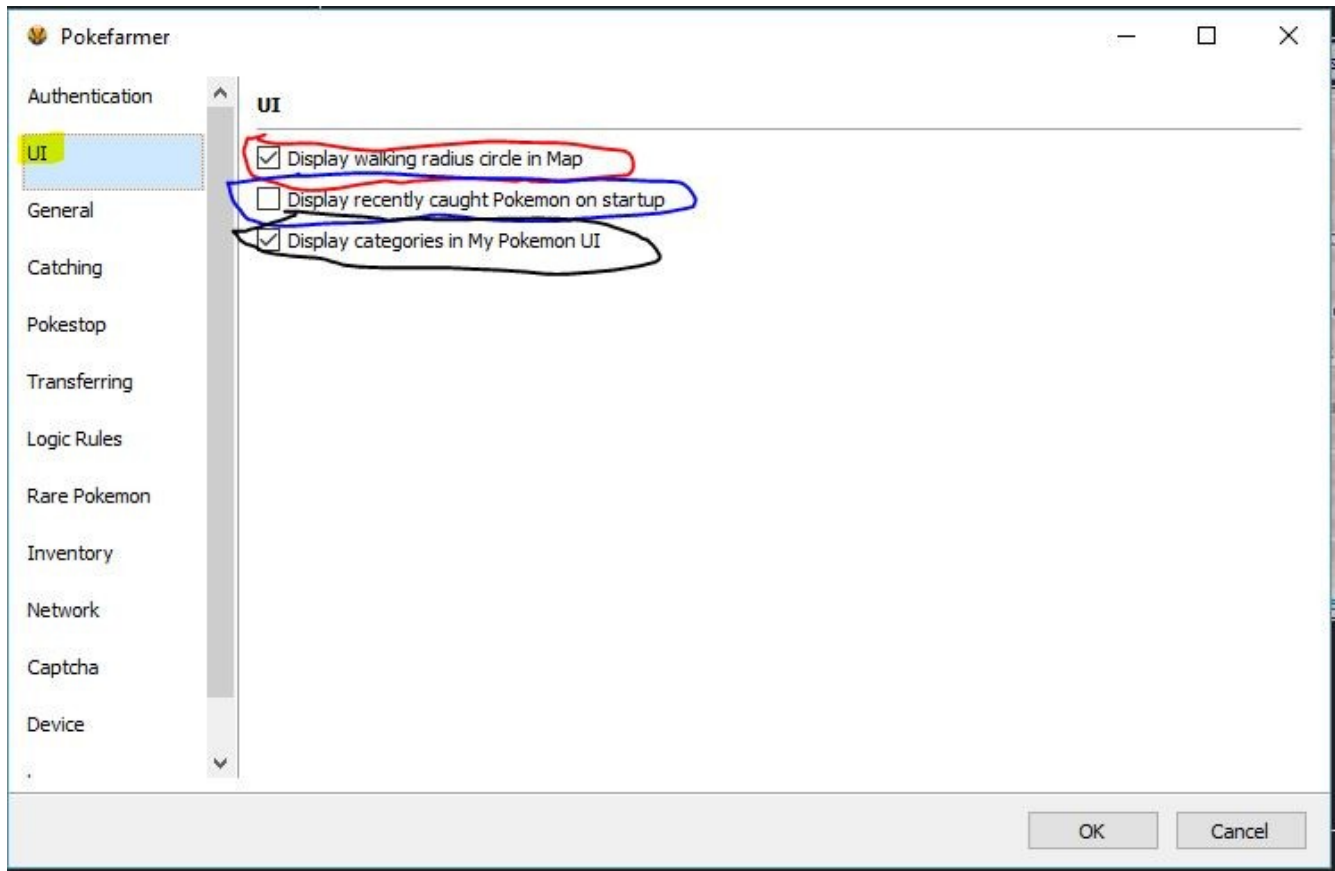


Now you should see something like this:



We are going to ignore the highlighted area for now as that is where you CAN put in your authentication key and where you will see it after entering it in. Lets move on to UI settings next.

UI Settings



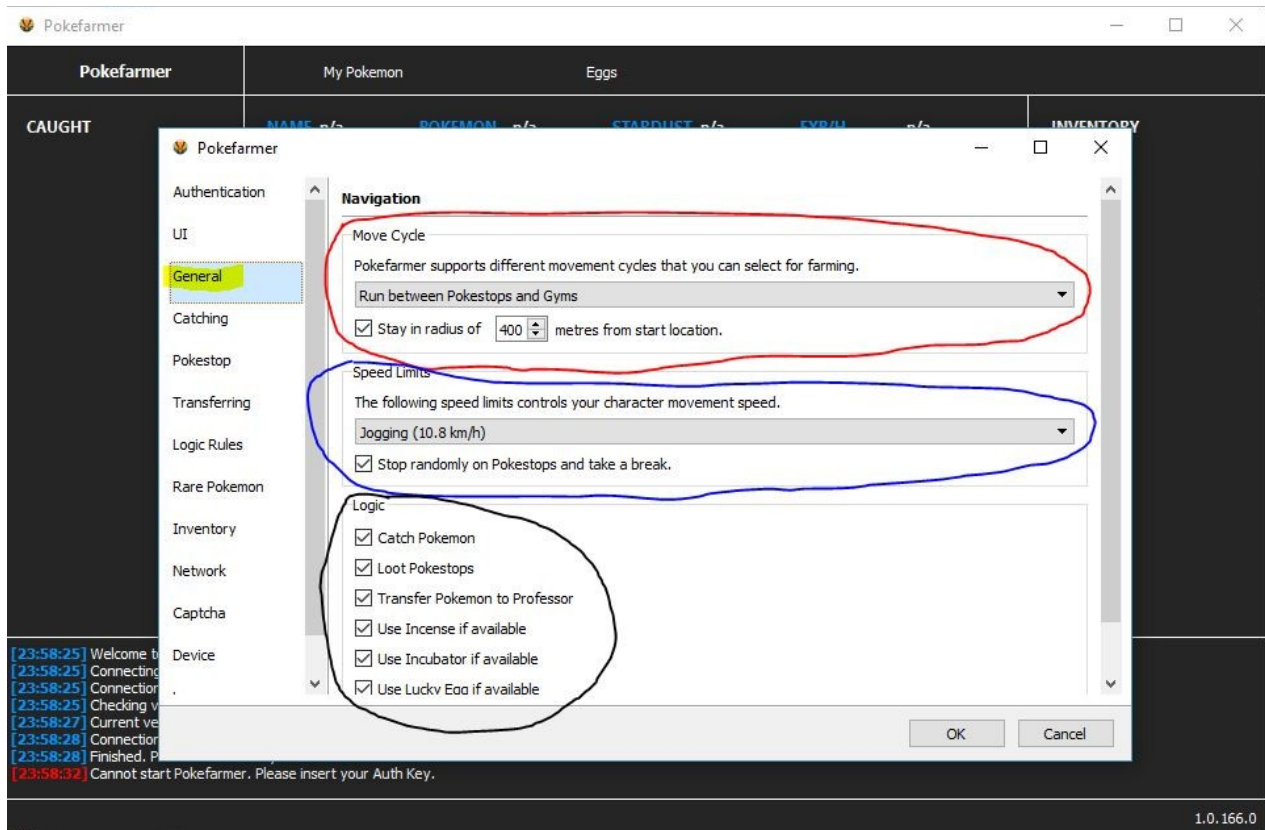
As you can see above we have 3 settings in UI.

The red circled setting “Display walking radius circle in Map” simple shows a blue circle around the radius you have set for staying in if you use that setting in General Settings. Unchecking that, will remove that blue circle.

The blue circle “Display recently caught Pokemon on start-up” actually means, it will keep a list of your Pokemon. caught up until this point. For those wishing to have that only show for each session, we suggest you uncheck this option.

Last but not least, the black circle “Display categories in My Pokemon UI” changes the My Pokemon section to go from categories of Pokemon. to a singular list if unchecked. Try it out with and without a check to decide what you like better.

General Settings



As you can see we have 3 sections in Settings>General we will now go over each section in detail so that you have a full understanding of your new farming bot.

Move Cycle and Speed Limits

In the red circle you will see the Move Cycle and Speed Limits. These are some important settings to address, typically you can just set it to run between pokestops or between pokestops and gyms, never set it to just gyms if you plan to get pokeballs and other loot. In this image you see it also has a stay in radius setting. This setting means from the point you start at until x amount (the radius number inputted in this case 400 meters from start location) in all directions will be your only zone to walk around and farm stops and Pokemon. You will not be able to go outside of this perimeter which will be indicated as a large blue circle on the map once the bot starts.

Usually in small to medium sized parks people turn this option on and set it to around 200-400m. In larger areas you might hear of some people putting it up to around 700. That choice is yours to make based on your needs. We also recommend turning this option on if you want to farm a certain location (for nests and such). However if you wish to roam freely then uncheck that stay in radius of box and you will wander around.

Next is the Speed Limits, this is something that has been under a lot of controversy, so it will be addressed in a simplified way. The two recommended speeds are now Walking or Biking, not driving. The reason is simple, since a patch from Niantic going at driving limit will trigger warnings about not driving and playing Pokemon. at the same time, and while PF can click on it saying you are a passenger it does not count towards your egg hatching count. As such we keep that option off. So when to walk and when to jog?

Typically if you are just wandering around without staying in a radius of anything, then walking is fine. If you are going to be in a set area under lets say 500-700m then use jogging as that will still be realistic enough and will get you places fast enough to keep a semi decent xp/hr ratio.

Under that option you will see stop randomly on pokestops and take a break. We typically recommend keeping this on unless you are doing less than 3 hours of botting a day on an account. This keeps the bot acting more and more human-like and helps avoid detection.

Logic

Last but not least we have our Logic section circled in black.

-Catch Pokemon.

This by default should be kept on unless you have no pokeballs or are just wanting to walk around for farming egg hatching.

-Loot Pokestops

This by default should be kept on unless you have too many items in your inventory and are not recycling them or are just wanting to walk around for farming egg hatching.

-Transfer Pokemon to Professor

The only time this should be off is if you do not want to transfer Pokemon. at all to the professor, which realistically you should be doing at least manually from time to time. If you do not have this box checked, it could ignore your logic rules (will be discussed later) for each Pokemon.

-Use Incense if available

This setting is a matter of preference. Some people prefer not to use Incense unless they are manually playing, some people want it on so that the bot can catch more Pokemon. to help increase xp/hr. In this case neither option adds more risk than the other.

-Use Incubator if available

This setting is also a matter of preference. Some people prefer not to use Incubators unless they are manually playing, some people want it on so that the bot can cycle through the eggs and gain more xp while transferring low hatched Pokemon. In this case neither option adds more risk than the other.

-Use Lucky Egg if available

This setting is also a matter of preference. Some people prefer not to use Lucky Eggs unless they are manually playing, some people want it on so that the bot can cycle through the eggs and gain more xp/hr. In this case neither option adds more risk than the other.

-Prioritize rare Pokemon

This setting technically is optional however it is usually left on by everyone, because of a different settings area where you can select what is a rare Pokemon. to you, and then PF will always put those ones if they are in the area as the 1st ones to catch.

This concludes the General Settings section of PF, next we will look at the Catching settings.

Catch Settings

On the left hand side you will see under General, Catching. Select this now and you should see something like one of the 2 images below:

Pokefarmer

Authentication

UI

General

Catching

Pokestop

Transferring

Logic Rules

Rare Pokemon

Inventory

Network

Captcha

Device

Catching

Pokeball Strategy

You can choose between a different set of rules how the bot should decide which Pokeball it should use when catching a new Pokemon.

Use CP based Pokeball strategy

CP based Pokeball strategy

Info: The following settings are active if you select **CP based Pokeball strategy** above. Setup the minimum CP to use the specific mentioned Pokeball for. Set it to **zero** if you don't want the bot to use that Pokeball.

Pokeball min. CP: 0

Greatball min. CP: 450

Ultraball min. CP: 598

Masterball min. CP: 0

☒ Never use Masterball!

☒ Use random throw accuracy.

☒ Use highest Pokeball on rare Pokemon

Catching Strategy

☐ Skip Pokemon if caughts are > 0 in last Hour

OK Cancel

Pokefarmer

Authentication

UI

General

Catching

Pokestop

Transferring

Logic Rules

Rare Pokemon

Inventory

Network

Captcha

Device

Info: The following settings are active if you select **CP based Pokeball strategy** above. Setup the minimum CP to use the specific mentioned Pokeball for. Set it to **zero** if you don't want the bot to use that Pokeball.

Pokeball min. CP: 0

Greatball min. CP: 450

Ultraball min. CP: 600

Masterball min. CP: 0

☒ Never use Masterball!

☒ Use random throw accuracy.

☒ Use highest Pokeball on rare Pokemon

Catching Strategy

☐ Skip Pokemon if caughts are > 0 in last Hour

Razzberry Strategy

Use Razzberry if Pokemon CP is > ...

☒ Minimum CP is 230 to use Razzberry

☒ Minimum IV is 0 to use Razzberry

OK Cancel

-Use highest PokeBall on rare Pokemon

This is discretionary and you can uncheck it or check it. In our example picture we decided to leave it checked for simplicity, and because if we deem it a rare Pokemon. we want to make sure we catch it.

Catching Strategy

You have one option here, Skip Pokemon. if caughts are > x amount in last Hour. This option by default has be checked with 45 Pokemon. /hr. This is based on formula regarding the limit of Pokemon. and even pokestops you are allowed to catch in a 24 hour period before you can be soft-banned and flagged with Niantic. The limit per 24 hours is 1000 Pokemon and 2000 Pokestops. We suggest you keep under that amount with each account at all times to avoid the risk of getting flagged. You can however uncheck it if you feel like you can manage the amount of Pokemon. you catch per day on your own as was done in our example picture.

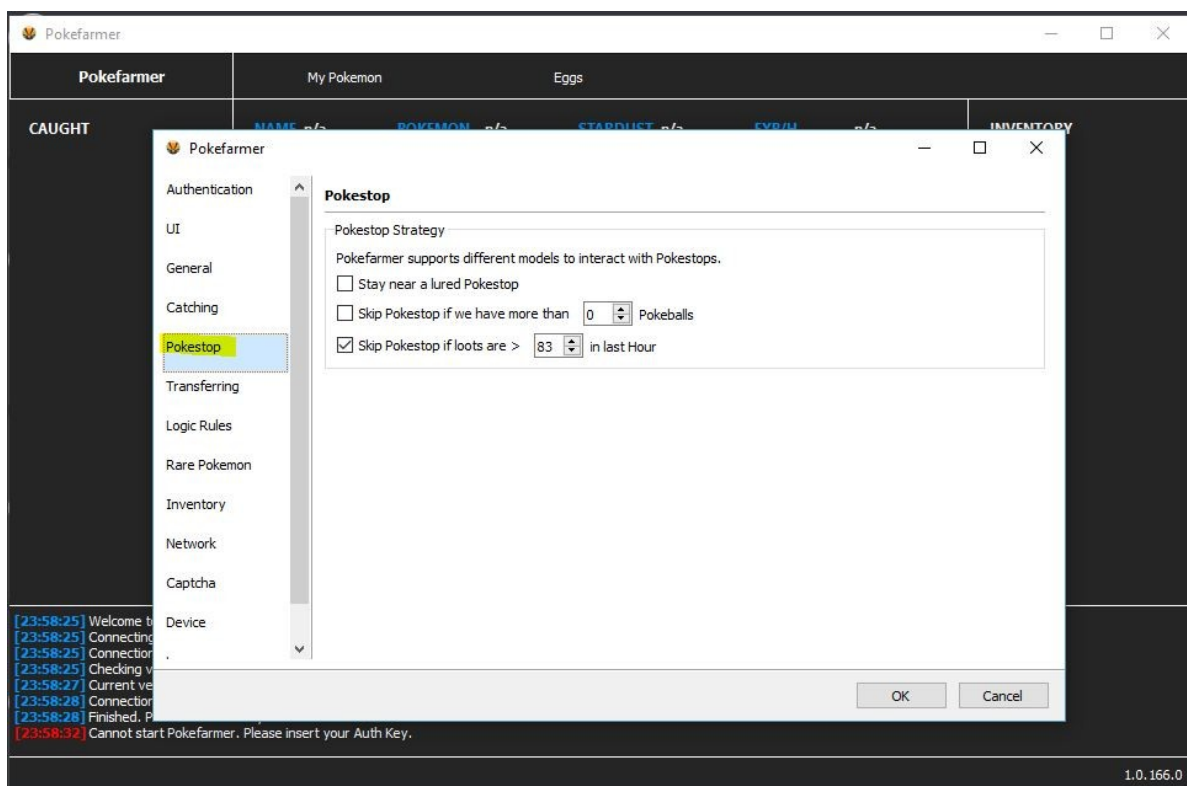
Razzberry Strategy

You have 3 sections here, the first is Use “Do Not Use Razzberry”, “Razzberry if Pokemon CP is > ...”, “Razzberry if Pokemon IV is > ...”, “Use Razzberry if Pokemon is rare” and “Use Razzberry always, if possible”. These options are self explanatory and if you select the CP, or IV one the settings below must be altered depending on which on you select, and if you select for “If Pokemon is rare” then you must have them indicated as rare in the Rare Pokemon section of the settings, which we will get into a bit later. In our example picture we have it set to Use Razzberry if Pokemon CP is > and then selected minimum CP of 230 to use a Razzberry. You can uncheck it or not use these settings as you see fit.

The next 2 sections as mentioned above identify if you are using CP or IV based Razzberry settings, what the minimum CP lvl or IV level must be of the Pokemon. in order to use the Razzberry.

This concludes the Catching Settings section.

Pokestop Settings



Welcome to Pokestop settings you can locate it after clicking the highlighted section under settings as seen in the picture above. This is one of the more quicker option sections so we are going to breeze right through it.

Pokestop Strategy

You have three options here, and they are pretty easy to use.

-Stay near a lured Pokestop

If you want your bot to stick around lured stops to get the benefit of them, check it. If not or if you are in an area with many lured stops then uncheck it. When a pokestop is lured your bot will stay there waiting for Pokemon. to spawn until its no longer lured, then it will carry on as normal.

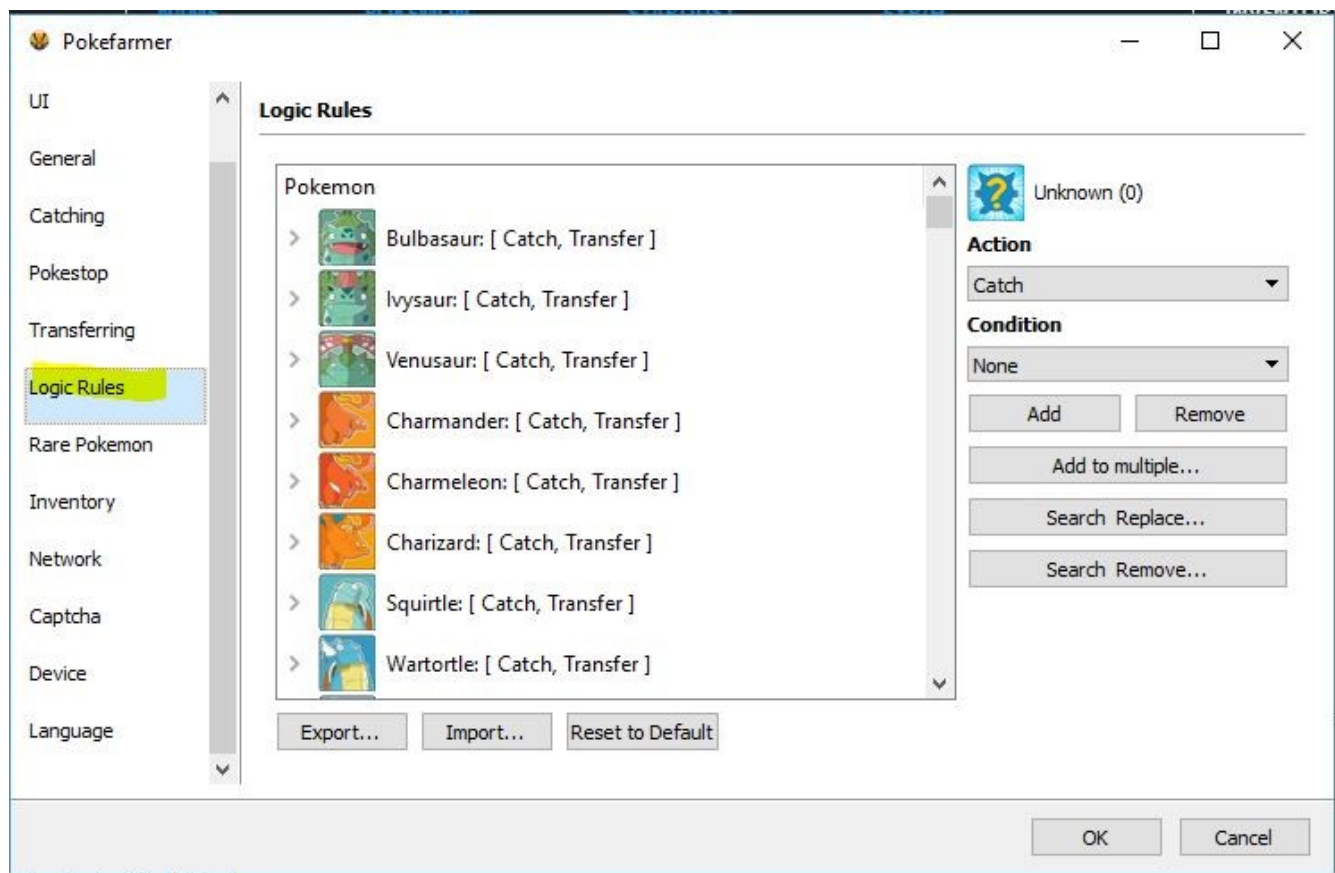
-Skip Pokestop if we have more than x amount of Pokeballs

You can choose to skip the pokestops to avoid risk of overcrowding your inventory by having that on and indicating how many total pokeballs you must have in order to turn on/activate that feature. This is discretionary and will not increase your risk of being banned by turning it on or off.

-Skip Pokestop if loots are $> x$ amount in last Hour

This is one many people recommend and goes along with the pokestop loot limit. This is again totally discretionary, but making the right choices with your settings combined can help you avoid the risk of hitting the 24 hour limit mentioned before. Feel free to ask around in the community for suggestions if you do not like the default settings.

Logic Rules



This section will create rules for each individual Pokemon. You can set a threshold for CP, IV, or quantity.

In the left pane you will see a list of each Pokemon. If you click on a Pokemon, it will select (highlight) it. You can click the arrow to the left of the icon for a shortcut giving you the ability to set a rule to catch or transfer (keeps 3 of selected Pokemon. with highest IV) the selected Pokemon. After you have selected a Pokemon, you will see a pane on the right that allows more specific rules to be applied to the selected Pokemon. The actions are described below.

Catch

This creates a rule for catching Pokemon. based on certain conditions.

Catch Conditions

None - Will attempt to catch any and all of that selected Pokemon., regardless of how many you have, CP, or IV.

Count - Set parameters for whether to catch the selected Pokemon. when you have a particular amount of that Pokemon.

-Operator : your choices are equal to, less than, more than, greater or equal to, less than or equal to, and != You will need to input the value in the field to complete your rule.

EXAMPLE: Say you want to catch Nidoran only if you have less than 2. You would enter

Left pane: Click to highlight Nidoran

Action: Catch

Condition: Count

Operator: <

Value: 2

CP - Set parameters to catch Pokemon. only when the CP meets those parameters/thresholds.
Select the proper operator and value.

EXAMPLE: Catch only Jigglypuff with CP above 600.

Left pane: Click to highlight Jigglypuff.

Action: Catch

Condition: CP

Operator: >

Value 600

IV - Set parameters to catch Pokemon. only when the IV meets those parameters/thresholds.
This process is just like the above options.

EXAMPLE: Catch Vulpix with IV greater than or equal to 85%

Left pane: Click to highlight Vulpix.

Action: Catch

Condition: IV

Operator: >=

Value: 85

Do Not Catch

This creates rules to skip catching the selected Pokemon. based on the entered conditions. These work the same as the above rules. Simply choose the condition and operator from the drop down menus and enter the value in the field.

Evolve

This creates rules to evolve the selected Pokemon. when certain thresholds are met. The setup works the same as prior rules. Enter condition and operator from the drop down menus and enter the value in the field.

Transfer

This creates rules to transfer the selected Pokemon. when certain conditions are met. The setup works the same as previous rules, however you will notice there are three other conditions in this section: "highest CP", "highest IV", and "highest CP and IV".

****NOTE**:** If you select transfer with a condition of None, it will transfer any and all of the selected Pokemon. you catch or have caught.

When one of the three "highest" conditions are selected, the condition value then changes to "Keep" so it will keep your highest CP, highest IV, or highest CP and IV (both values must be highest) of that selected Pokemon. The value will denote the quantity of those Pokemon. to keep.

EXAMPLE: I want to keep 2 of each Clefairy with highest IV and transfer the rest.

Left pane: Click to highlight Clefairy.

Action: Transfer

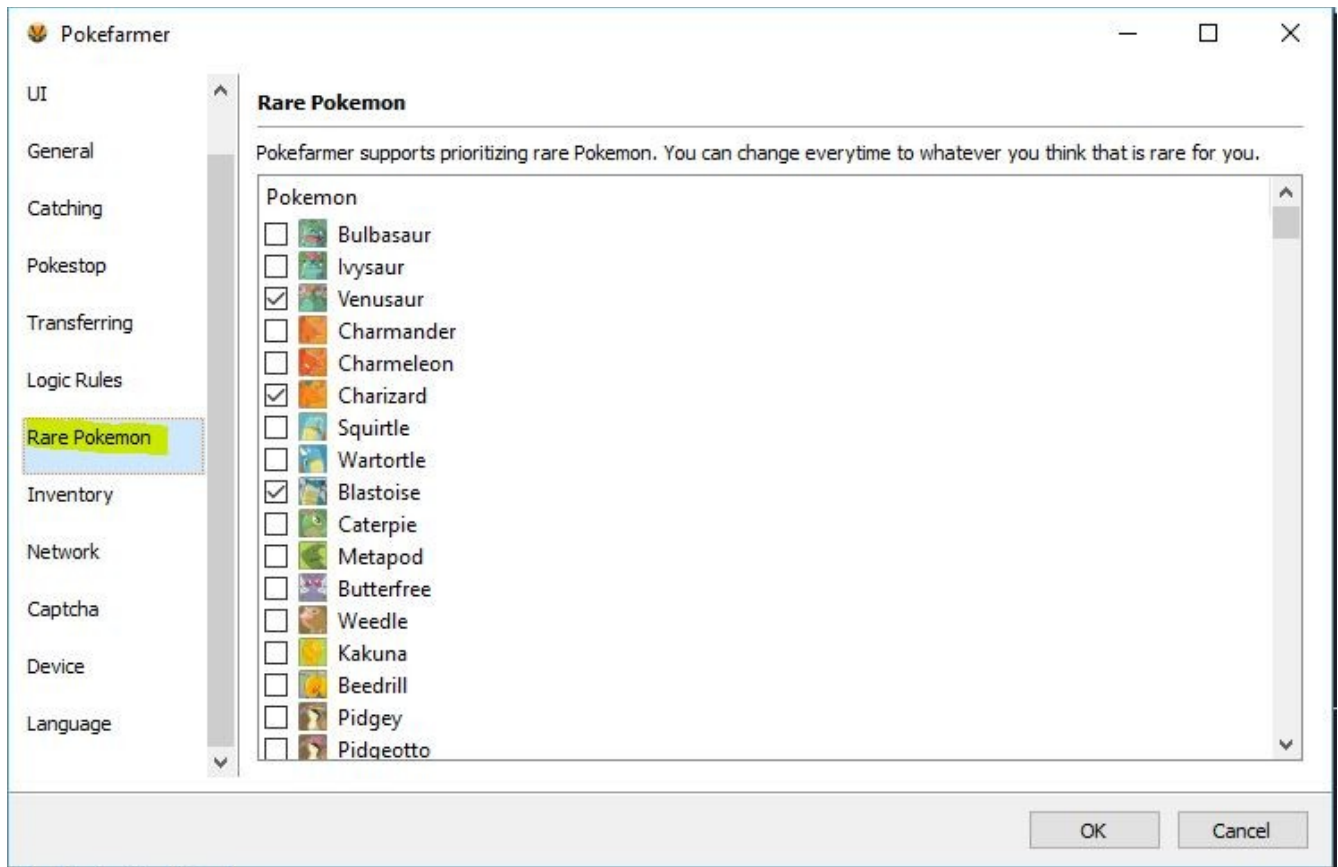
Keep: highest IV

Value: 2

In order to keep you from repeating the same rule for multiple Pokemon. by hand, you may choose to click the button to "Add to Multiple" and select which Pokemon. you'd like to apply the same rule for.

Also if you are unsure about settings and want to try someone else's you can go to our forums here: <https://www.thebuddyforum.com/pokefarmer-forum/287008-share-behaviors-community.html> to get a copy. You simple download the .json file and import it into the logic rules, or if you have settings to share you can export your .json file and share it there too!

Rare Pokemon



This is by far the most self-explanatory section of the settings. Here is where you can designate what is deemed as rare Pokemon. to you. This is the list that is used to determine rare Pokemon. in other settings.

Inventory

Inventory

Recycle

Pokefarmer is able to recycle your inventory items automatically, especially when your inventory is full. Please specify what items it should recycle and how much should be kept.

☒ Recycle immediately!

☐ Recycle item Pokeball and keep 0

☐ Recycle item Greatball and keep 0

☐ Recycle item Ultraball and keep 0

☐ Recycle item Masterball and keep 0

☒ Recycle item Potion and keep 0

☒ Recycle item Super Potion and keep 0

☒ Recycle item Hyper Potion and keep 0

☐ Recycle item Max Potion and keep 0

☒ Recycle item Revive and keep 25

☐ Recycle item Max Revive and keep 0

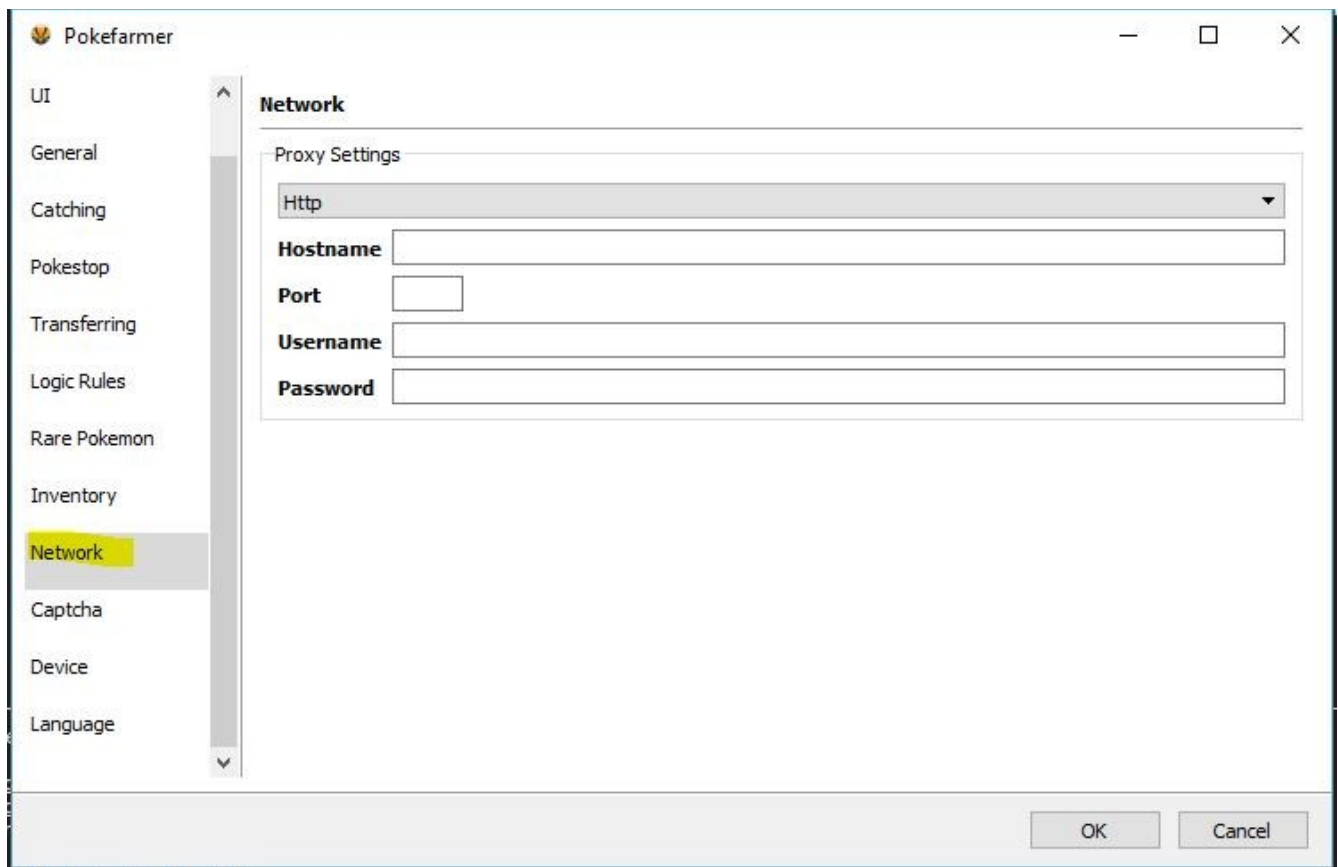
☐ Recycle item Lucky Egg and keep 0

OK Cancel

This section is dedicated to helping you manage your inventory. You can choose to recycle things immediately that you do not want, or to wait until your inventory is full. As many people do not wish to risk hitting their item limit most decide to recycle immediately.

For each item that you check-mark, you must put in a number beside it (that number indicates how many of that item to keep), or else it will keep zero of that item (again only if the item box is check-marked). Otherwise if there is no check-mark, then you will not recycle that item and no number is needed.

Network



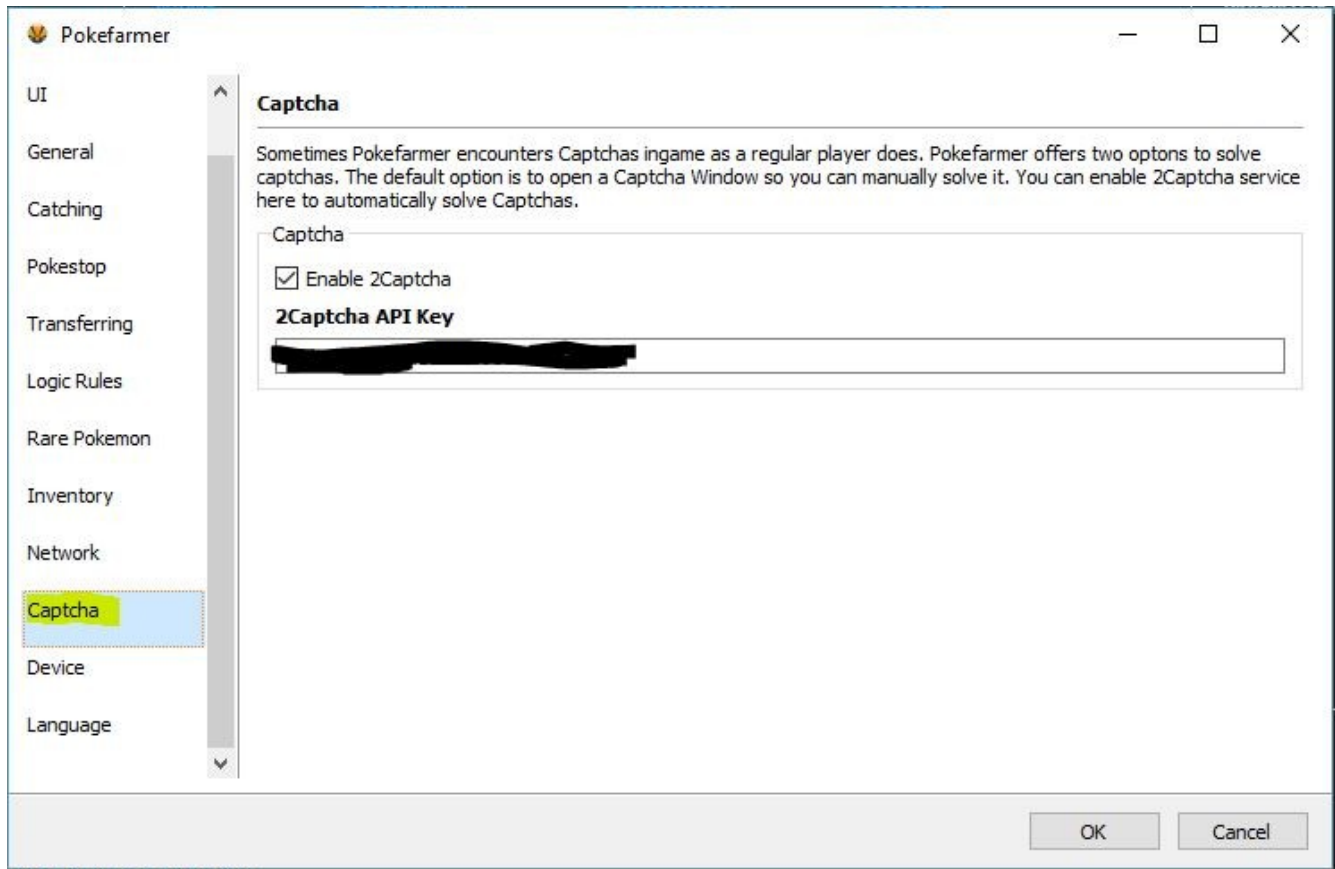
The screenshot shows the 'Pokefarmer' application window with the 'Network' tab selected in the left sidebar. The main area is titled 'Network' and contains a 'Proxy Settings' section. This section has a dropdown menu currently set to 'Http'. Below the dropdown are four input fields: 'Hostname', 'Port', 'Username', and 'Password'. The 'Port' field is smaller than the others. At the bottom right of the window are 'OK' and 'Cancel' buttons.

Network	
Proxy Settings	
	Http
Hostname	<input type="text"/>
Port	<input type="text"/>
Username	<input type="text"/>
Password	<input type="text"/>

This section deals with setting up proxies.

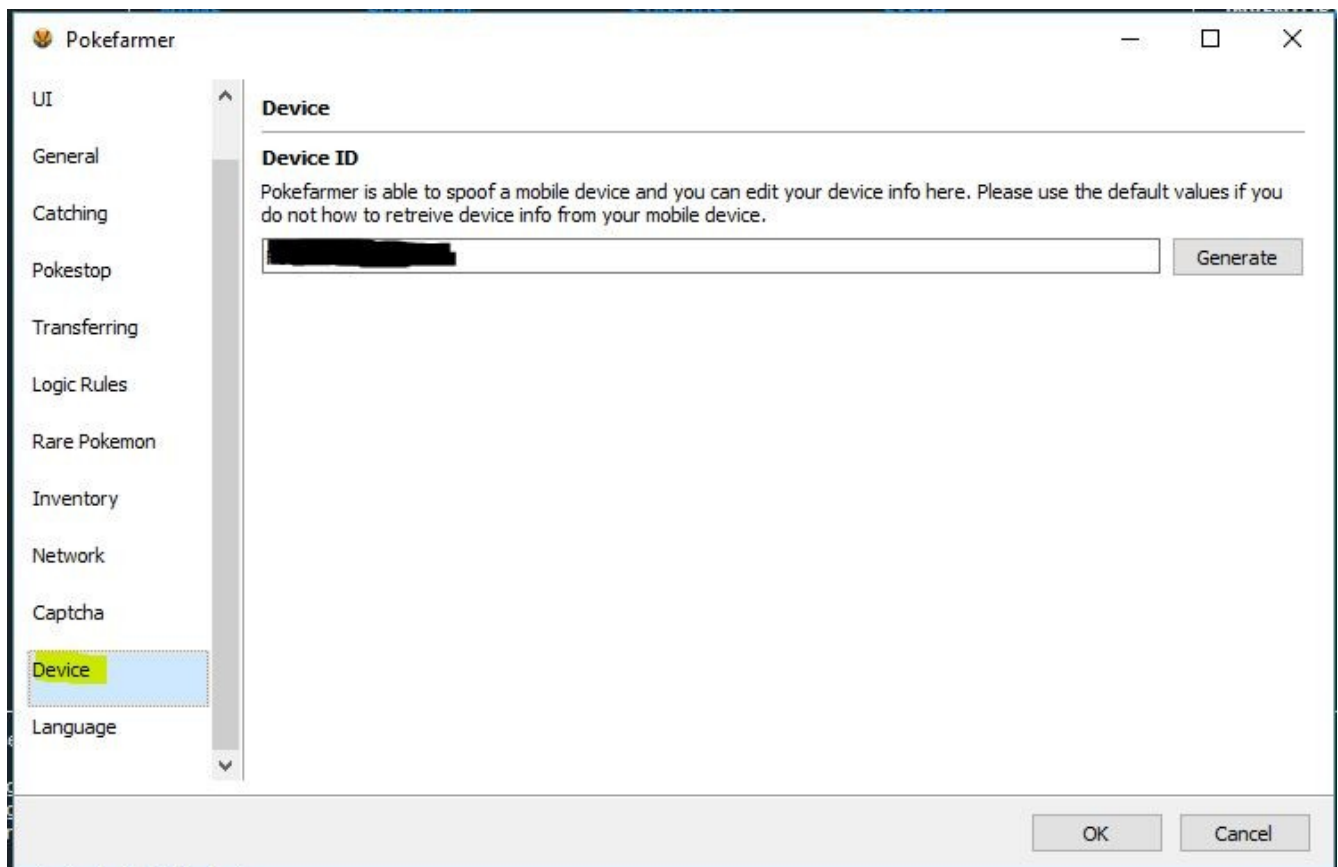
You can choose between HTTP or Socks5 based on the information provided for your proxy. From there you will enter in the Hostname, Port number and any username or password provided. Please keep in mind if this information is incorrect, invalid or if there is connection issues to the proxy, then you will run into errors trying to start PokeFarmer.

Captcha



Exactly as the description says this is used as a section to help with inputting a <http://2captcha.com> api key. One thing to make certain is when you are in your 2captcha account that you turn on 100% accuracy in the settings. From there take your API key and copy paste it into the area that is blacked out and ensure you have the box checked. If you do not wish to put any money into 2captcha or have issues where it is stuck on solving captcha's then disable this and ensure the box is unchecked, log back in and manually solve captcha's as they appear in a new pop-up window. Please note that past supplying a spot to put the API key we do not support 2captcha service at all and any questions about it must be directed to their support.

Device Settings



The screenshot shows the 'Pokefarmer' application window with the 'Device' settings tab selected in the left sidebar. The main content area is titled 'Device' and contains a section for 'Device ID'. Below the title, a text box explains: 'Pokefarmer is able to spoof a mobile device and you can edit your device info here. Please use the default values if you do not how to retrieve device info from your mobile device.' Below this text is a text input field containing a blacked-out string, followed by a 'Generate' button. At the bottom of the window are 'OK' and 'Cancel' buttons.

Pokefarmer

UI

General

Catching

Pokestop

Transferring

Logic Rules

Rare Pokemon

Inventory

Network

Captcha

Device

Language

Device

Device ID

Pokefarmer is able to spoof a mobile device and you can edit your device info here. Please use the default values if you do not how to retrieve device info from your mobile device.

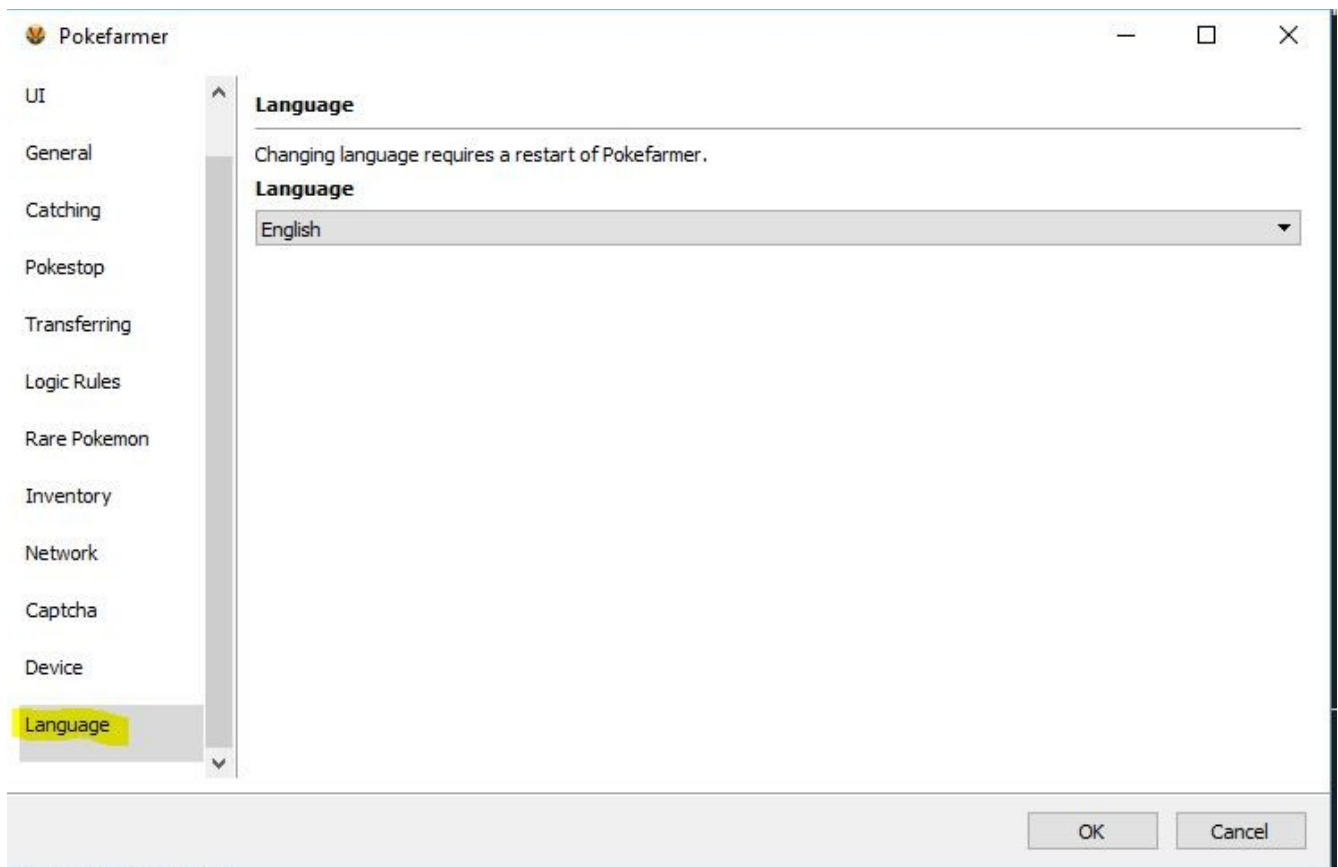
[Blacked out text]

Generate

OK Cancel

In this section you have the option to generate a “device ID” or use your own. If you hit generate, a device ID will appear where the blacked out section is. Otherwise you will need to Google on how to find your specific device ID and make sure that it is the correct ID. As the description states, if you do not know for sure how to do this, DO NOT attempt it anyways, and just use the default values here. Failure to heed these warnings could increase the risk of detection.

Language Settings



This is the final setting in PokeFarmer, this is where you can click the drop-down and select your desired language. After you do so, you will need to select OK and restart PokeFarmer for the changes to take effect. If you notice your language is not on here, you may request to have it added either in our Discord Channel or on our forums.

Start-Up And Go

Congrats! You now have all of your settings in place and are ready to go. Time to hit start and then select your login method. Either choose G-Mail or PTC and enter in your login details. After that enter in your key, select your region and make sure you already picked your spot on the map! Now sit back and watch as you reap the benefits that PokeFarmer has to offer!

F.A.Q.

Q: I am seeing "MAX SESSIONS" after the bot crashes for some reason (connection lost/bugged plugin/bugged combat routine/etc.). What gives?

A: Go here (<https://www.buddyauth.com/>), log in with your user information and you can do a number of things to manage your account/keys. Under "Sessions" you are able to see if your key is being used, when it was started, how long it has been running and you can also kill that session. Killing the session after the bot crashes is what you will be doing in this case. The "Keys" tab will let you know what keys are active/unused/expired with a few additional details. "Upgrade" will let you upgrade your key to allow more sessions to be used with a single key.

Q: Can I request new features be added to Pokefarmer?

A: You can post a feature request here: <http://bit.ly/2au9vVL>

IMPORTANT LINKS

RELEASES FORUM: <http://bit.ly/1p2wmup>

POKEFARMER FORUM: <http://bit.ly/2aDJD83>

SUPPORT FORUM: <http://bit.ly/2b239Pg>

REQUESTS FORUM: <http://bit.ly/2b4wbs4>

BAN REPORTS FORUM: <http://bit.ly/2bpvgYc>

LATEST RELEASE: <http://updates.buddyauth.com/GetNewest?filter=PokeFarmer>

POKEFARMER TIMER THREAD: <http://bit.ly/2b40L85> (credit: @Jimmy06)

POKEFARMER DISCORD CHANNEL: <https://discordapp.com/invite/je44Gun>