



[ShutUp]

Manual (english)

version 2.0.122 beta

- I. Log-Tab
- II. Sound-Tab
- III. Answer-Tab
- IV. Friend & Guild-Tab
- V. myName-Tab
- VI. Securities-Tab



Log-Tab



1 - This is the ShutUp Chatlog

2 - Switching on/off to save Log

3 - click to delete Chatlog file

- You can find the Logfiles at: "...\\Honorbuddy\\Plugins\\ShutUp\\Logs\\"



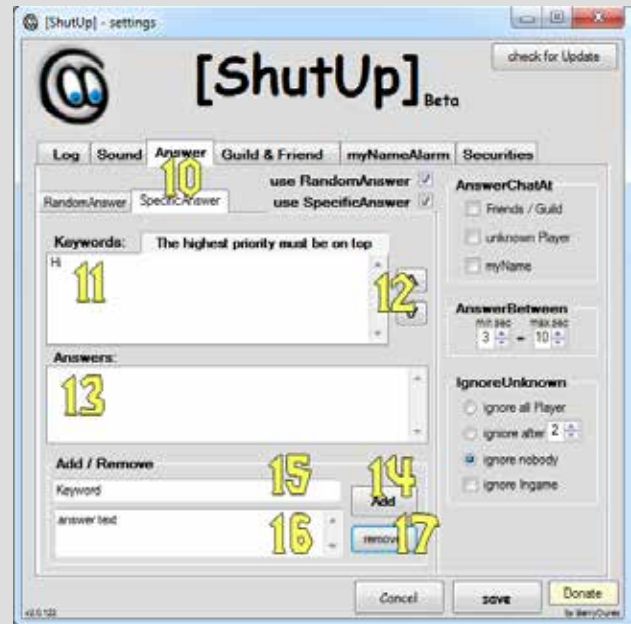
Sound-Tab



- 1 - Switching on/off to play sound by Unknown Player / Friends&Guild / myName
- 2 - combobox to select a sound
- 3 - click this button for a Soundtest
- 4 - Switching on/off to play the SoundFile with a external SoundPlayer (for example Mp3s)
- 5 - SoundLoop option: how many loops
- 6 - SoundLoop option: time (seconds) between loops
- 7 - this is a list of Soundfiles that you have add to the SoundList (look at Point 9)
- 8 - click this button to open a FileDialog to select a Soundfile
- 9 - if you have selected a Soundfile (Point 8), you can add it to the list with this button
- 10 - if you have selected a Soundfile (Point 7), you can remove it from the list (Point 7) with this button



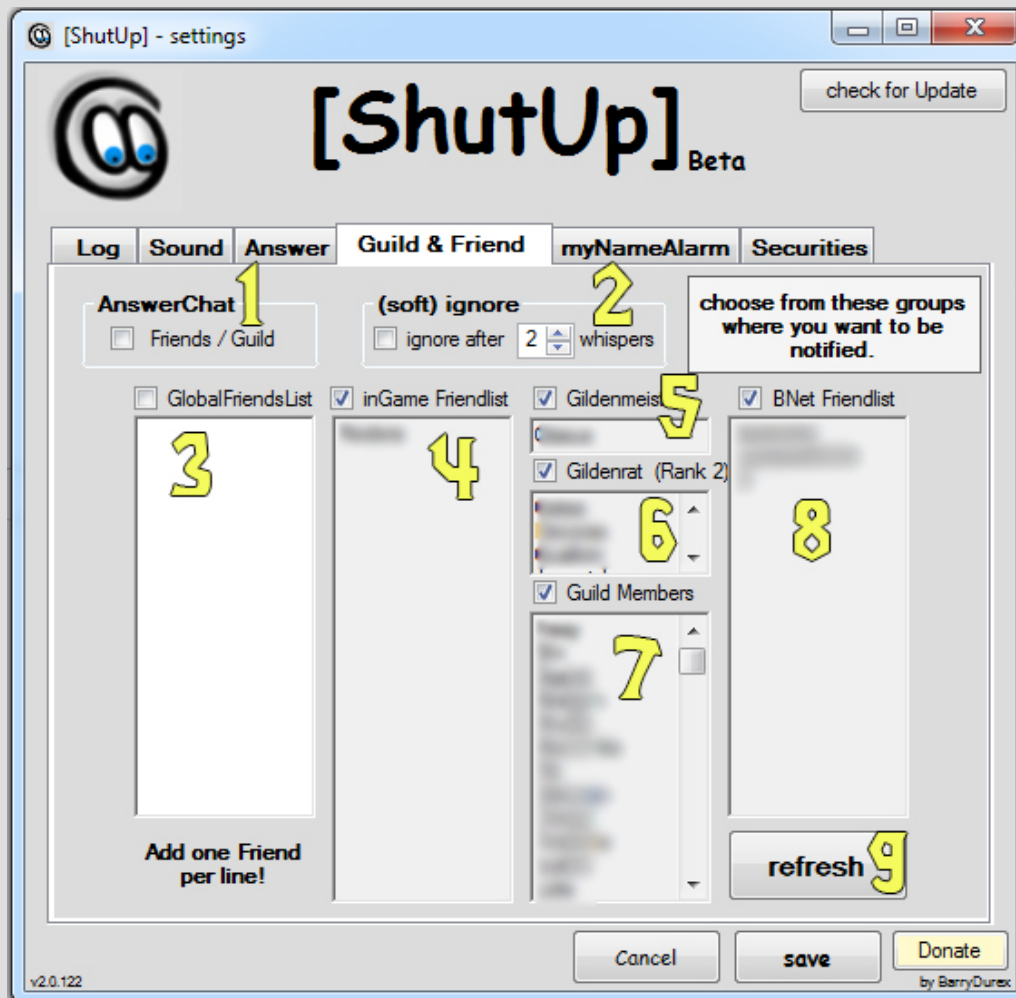
Answer-Tab



- 1 - this is the RandomAnswer-Tab. If you have "use RandomAnswer" activated (Point 9), ShutUp will select a random message from the list (Point 2)
- 2 - this is a list of RandomAnswers that you have added (look at Point 4)
- 3 - in this Textbox, you can write a new RandomAnswer
- 4 - if you have written a new RandomAnswer (Point 3), you can add it with this button
- 5 - if you have selected a RandomAnswer (Point 2), you can remove it from the list (Point 2)
- 6 - Switching on/off to answer at Unknown Player / Friend & Guild / myName
- 7 - set answer between min seconds and max seconds (to simulate the writing)
- 8 - Switching on/off (soft)Ignore or (ingame)Ignore and ignore after X whispers
- 9 - Switching on/off to use RandomAnswer and/or use SpecificAnswer
- 10 - this is the SpecificAnswer-Tab. If you have "use SpecificAnswer" activated (Point 9), ShutUp checks the whisper if a Keyword(Point 11) is contained and then selects an answer(Point 13). The priority of the Keywords is descending order. (the highest priority on top) Changed the order with the buttons (Point 12).
- 11 - this is a list of Keyword that you have add (look at Point 14)
- 12 - Change the order of the Keywords(Point 11) with these buttons.
- 13 -if you have selected a Keyword(Point 11),then you find the answers of this Keyword here
- 14/15/16 - if you have set a Keyword(Point 15) and a answer text(Point 16), you can add it with this button(Point 14)
- 17 - click this button if you have set a Keyword(Point 15) and a answer text(Point 16) to remove the answer text from the list(Point 13), or if you have only set a Keyword(Point 15)to remove the Keyword from the list (Point 11)



Guild & Friend-Tab



1 - Switching on/off to answer whisper from Friends and Guildmembers

2 - Switching on/off to (soft) ignore friend/Guild whisper and set ignore after X whisper

3 - add one friend per line. This list is for all Chars.

Switching on/off the checkbox(GlobalFriendsList) if you want answer/ignore this group

4 - this is a list from the inGameFriends of this Char

Switching on/off the checkbox(inGame Friendlist) if you want answer/ignore this group

5 - this your GuildMaster

Switching on/off if you want answer/ignore him/her

6 - this is a list from your GuildOfficers

Switching on/off if you want answer/ignore this group

7 - this is a list from your GuildMembers

Switching on/off if you want answer/ignore this group

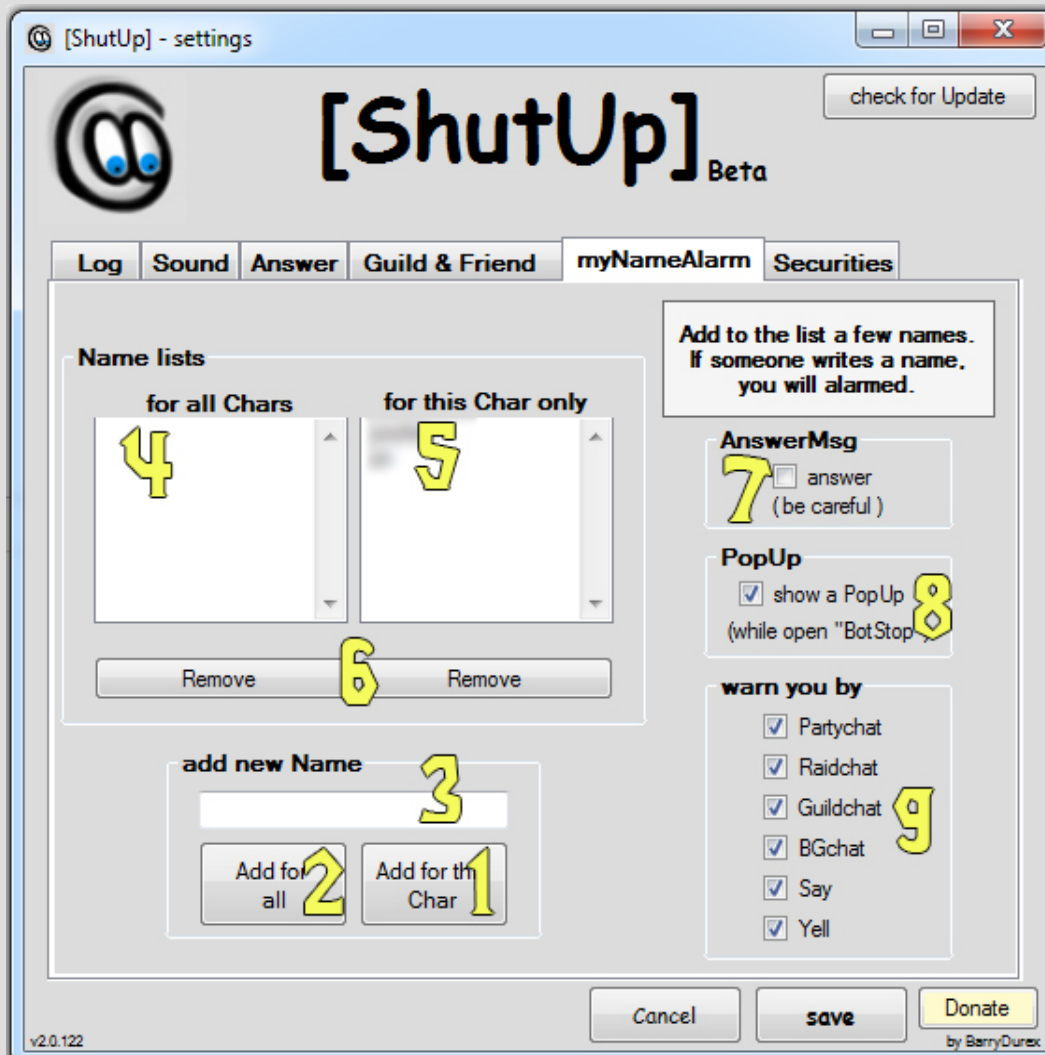
8 - this is a list from your BattleNetFriends

Switching on/off if you want answer/ignore this group

9 - if you want to refresh Point 4 - 8, click this button



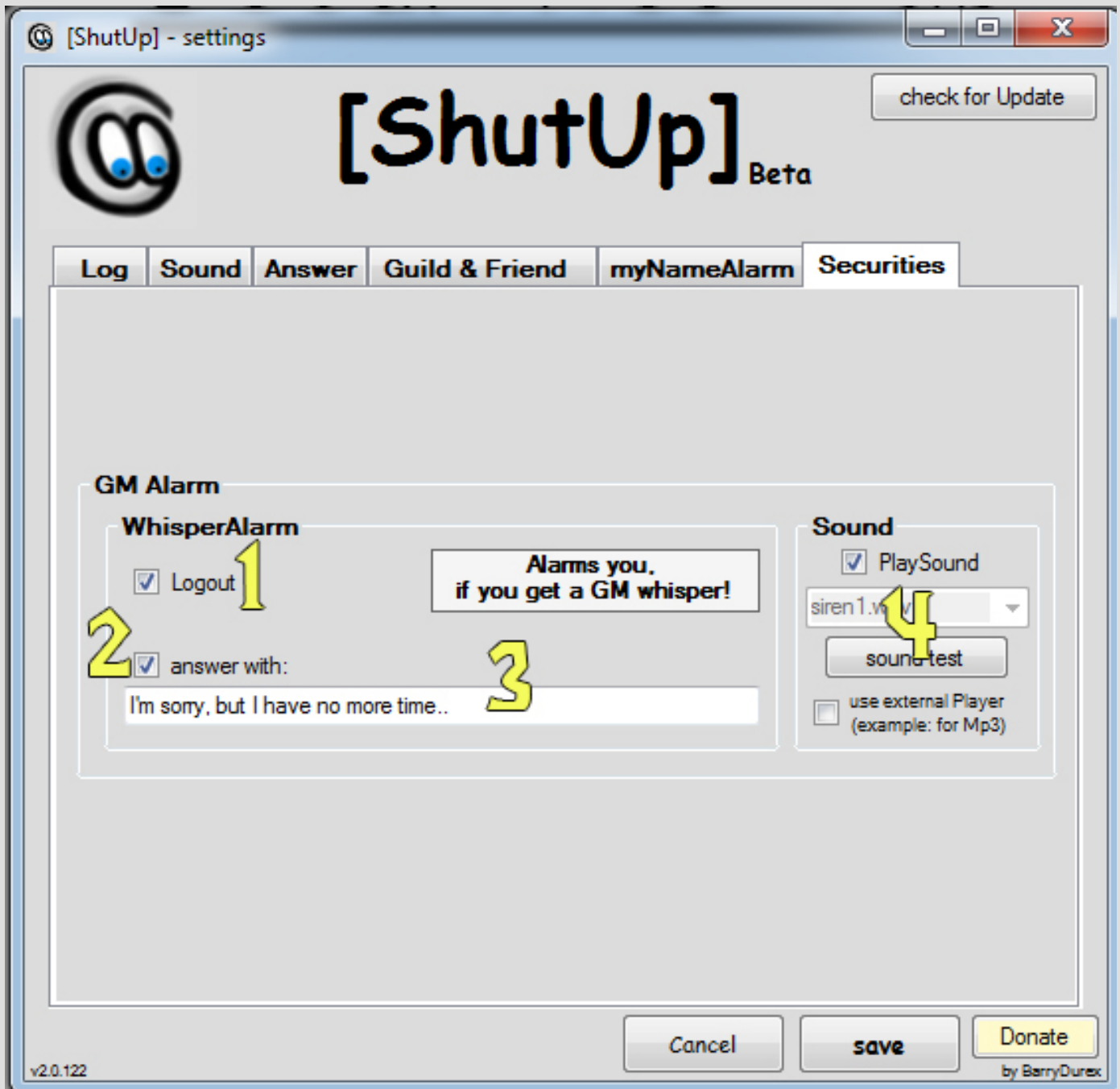
myName-Tab



- 1 - if you have written a Name (Point 3), you can add it to the list (Point 5) with this button
- 2 - if you have written a Name (Point 3), you can add it to the list (Point 4) with this button
- 3- in this Textbox, you can write a "new" Name
- 4 - in this list are the names for all chars
- 5 - in this list are the names for this char only
- 6 - if you have selected a name from Point 4 or 5, click one of this button to remove it
- 7 - Switching on/off to answer by myName(Point 4, 5)
- 8 - Switching on/off to show a PopUp by myNameAlarm(Point 9).
- (the Bot will do nothing while open, like pressed BotStop)
- 9 - Switching these on/off from where you want to be notified



Securities-Tab



- 1 - Switching on/off to Quit WoW, if a GameMaster is whisper to you
- 2/3 - Switching on/off to answer a GameMaster with the answer from Point 3
- 4 - SoundSettings for GameMaster alarm

Thank you, that you have read the manual!

I hope it helped and I wish you a lot of fun with ShutUp. J

BarryDurex