



## Table of Contents

|  |    |
|--|----|
| HonorBuddy User Manual .....                                 | 1  |
| Getting Started .....  | 4  |
| Starting World of Warcraft .....                             | 6  |
| Starting HonorBuddy .....                                    | 7  |
| The Auto Updater .....                                       | 8  |
| Using HonorBuddy .....                                       | 9  |
| The Settings & Tools Window.....                             | 10 |
| The Plugins Window.....                                      | 12 |
| Plugin - AutoEquip2 .....                                    | 12 |
| Bot Mode – Grind .....                                       | 14 |
| Grind Bot Configuration .....                                | 14 |
| Bot Mode - Battlegrounds (BGBuddy).....                      | 15 |
| Mode – Mixed.....  | 16 |
| Mode – Archeology (ArcheologyBuddy) .....                    | 16 |
| Archaeology Configuration – Solving .....                    | 17 |
| Archaeology Configuration – Blacklisting .....               | 17 |
| Archaeology Configuration – Training.....                    | 18 |
| Mode – PartyBot .....  | 18 |
| Mode – Gathering (GatherBuddy2) .....                        | 19 |
| Gathering (GatherBuddy2) Configuration – Paths .....         | 20 |
| Gathering (GatherBuddy2) Configuration – Gather .....        | 21 |
| Gathering (GatherBuddy2) Configuration – Manage .....        | 22 |
| Gathering (GatherBuddy2) Configuration – Node Selection..... | 22 |
| Gathering (GatherBuddy2) Configuration – Advanced.....       | 23 |
| Mode – Questing.....   | 23 |
| Mode – Combat Bot.....                                       | 24 |
| Mode - Dungeons (DungeonBuddy).....                          | 24 |
| DungeonBuddy Configuration – Dungeons.....                   | 26 |
| DungeonBuddy Configuration – Scenarios .....                 | 27 |
| Mode – Professions (ProfessionBuddy).....                    | 27 |
| ProfessionBuddy Configuration – Overview .....               | 28 |

|  |    |
|--|----|
| ProfessionBuddy Configuration – Profile .....          | 28 |
| ProfessionBuddy Configuration – Actions .....          | 29 |
| ProfessionBuddy Configuration – Profile Settings ..... | 29 |
| ProfessionBuddy Configuration – TradeSkill .....       | 30 |
| Special Thanks .....                                   | 31 |

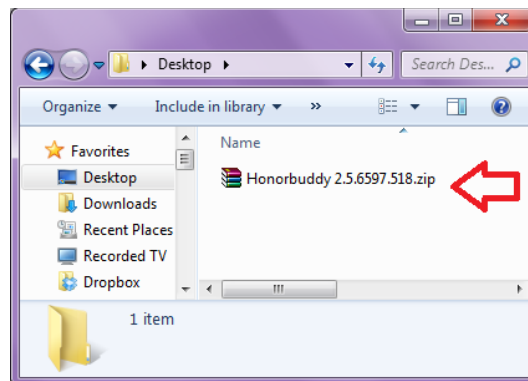
## Getting Started

Before we start you need to make sure you have the following.

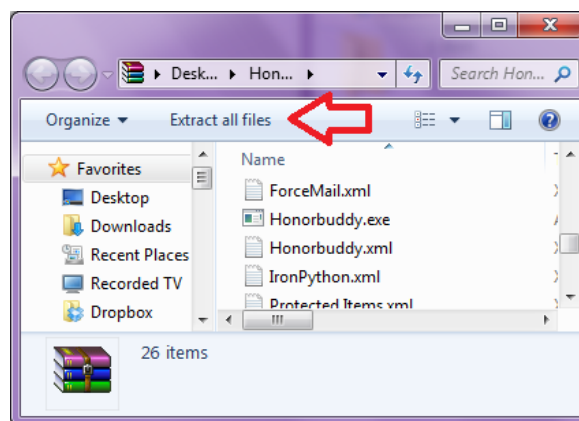
1. World of Warcraft is fully updated and is able to connect and play on Live Servers.
2. You have the prerequisites for HonorBuddy Installed, to do this you can use a Tool to check and install the necessary components it can be downloaded from this link [HERE](http://updates.buddyauth.com/) once its downloaded Right Click, and select "Run as Administrator" and once it's done installing restart your computer.
3. HonorBuddy Release Package - The Latest Version can always be found at <http://updates.buddyauth.com/>

Once you have the following completed, we need to open up the HonorBuddy Release package we downloaded from <http://updates.buddyauth.com/> the package is a ZIP file and we need to extract the contents of the zip file to a new folder.

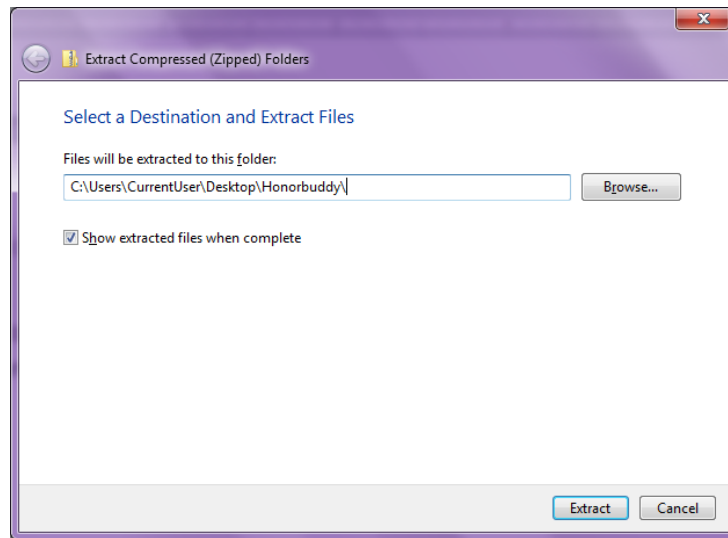
Step 1: Click on your **HonorBuddy.Zip** file you downloaded from <http://updates.buddyauth.com/>



Step 2: We need to extract the files to a new folder, so click "**Extract all files**"



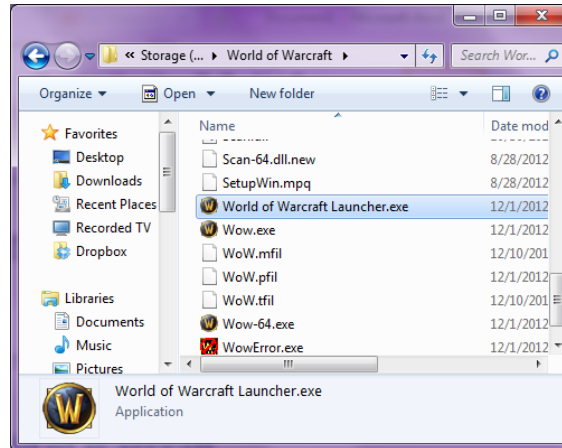
Step 3: We need to tell it where to extract to. I suggest extracting the files to a New Folder on your desktop so you can find it easily, and click Extract to extract the zip file to the specified folder.



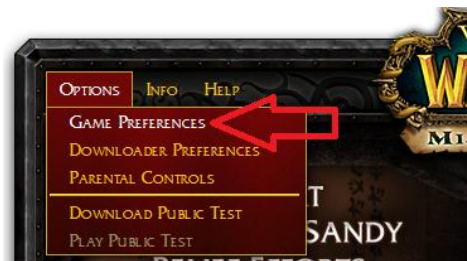
**All files that you extract from the HonorBuddy zip file, MUST all be in the same folder.**

## Starting World of Warcraft

Before we can start HonorBuddy we need to setup world of warcraft to get it ready to use the bot. to do this the first thing we need to do is start the World of Warcraft Launcher, we can do this by going into your world of warcraft folder and running World of Warcraft Launcher.exe



Once the Launcher is open, we need to click on Options, then Game Preferences.



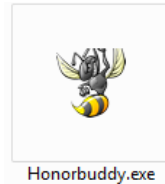
In the Game Preferences Menu, we need to have Display Mode set to Windowed, and Launch 32-bit Client Checked (This MUST be checked even if running a 64bit Version of Windows). Graphics API can be set to either DirectX 11 or DirectX 9, you don't need to change it at this time, but you may need to if there is a problem. Once you're done Press Ok, and click Play, to Start World of Warcraft.



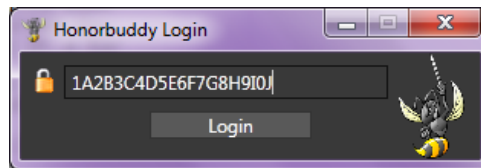
Once World of Warcraft is running, you must be completely logged in and in game before starting HonorBuddy.

## Starting HonorBuddy

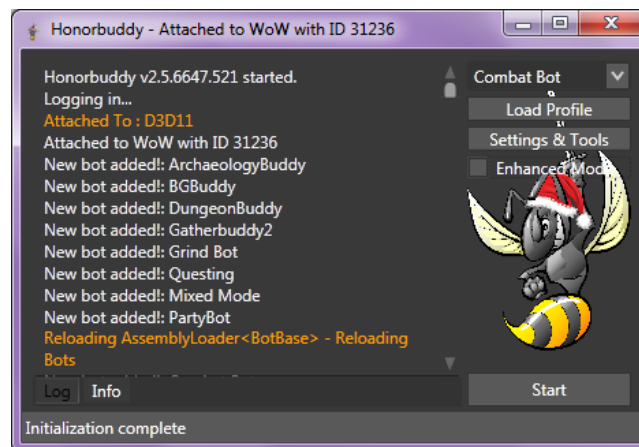
Before starting HonorBuddy you need to make sure you are completely logged into World of Warcraft and logged into the character you want to use the bot on. To Start HonorBuddy run Honorbuddy.exe from your HonorBuddy Installation Folder, you cannot use a Shortcut to run HonorBuddy.



Once the Program is started you be asked to Login with your **Key**. Your Key should be a 20 Character Long Alpha Numeric string, that was **E-mailed** to you after you **Purchased HonorBuddy**. If you have your Key, Copy and Paste it Into the Login Box and **Click Login**. If you didn't get your key after buying, then try registering at <http://www.buddyauth.com/> with the same e-mail address you used during checkout, once you get in you should be able to view your keys. If you still can't find it or it's not listed on the buddyauth website then send an e-mail to support@thebuddyforum.com with your transaction ID. Please check your Spam folder first as it may be in there!

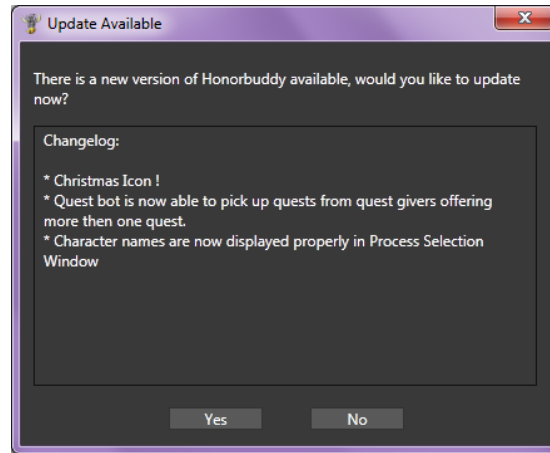


After Clicking Login, if World of Warcraft is running and everything is setup correctly, the main HonorBuddy Window will show and you're now ready to choose the mode you wish to use and Load an Appropriate Profile.

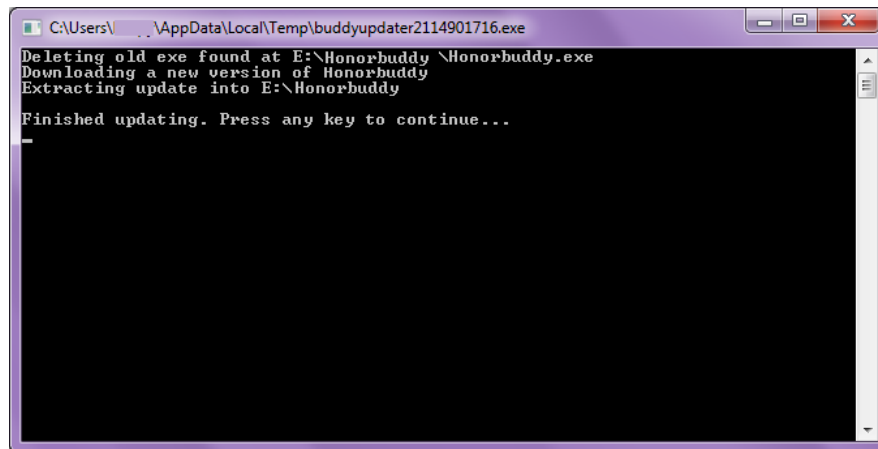


## The Auto Updater

After Logging into HonorBuddy if you're running an older version the Auto Updater will prompt you to update to the latest version. You can either click yes, to allow it to download and install the latest version or no, and continue to the main HonorBuddy window.



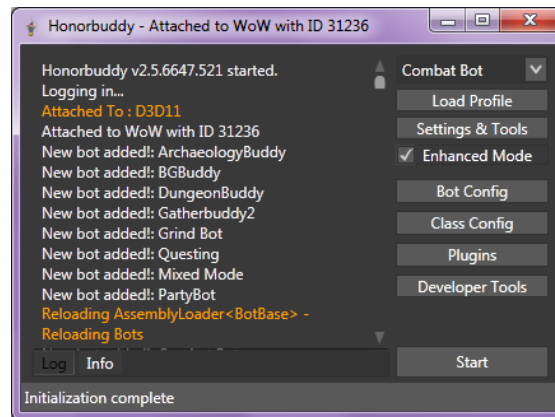
Clicking yes will close out your current session of HonorBuddy, and start the Auto Updater application to download and install the latest version of HonorBuddy for you. Once it's finished, press Any Key to Continue, closing the auto updater and re-launching HonorBuddy for you.



Congratulations you are now running the latest version of HonorBuddy. Next we will go over all the buttons you need to know.

## Using HonorBuddy

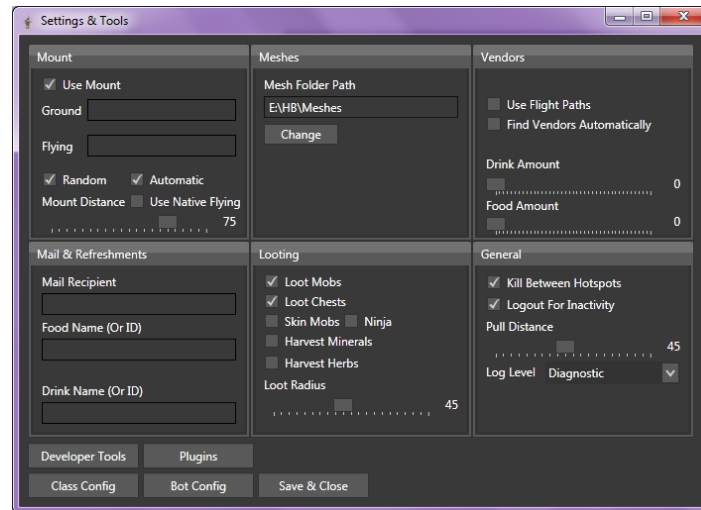
This is the HonorBuddy Main Window, all bot operations can be accessed from this window.



- Bot Selection Drop Down – lets you select the current mode that HonorBuddy is running in to, Grinding, Questing, Battle Grounds, can be selected using this dropdown.
- Load Profile – Loads a XML Profile, Some Modes require profiles to tell the bot what to do.
- Settings &Tools – Brings up the Global Settings window, in here things like your current Mount, Loot Options, Food and Drink Names, as well as your Mail Recipient can be set here.
- Enhanced Mode – This Checkbox will show or hide the Bot Config, Class Config, Plugins, and Developer Tools Buttons.
- Bot Config – This button will bring up a different configuration window depending on the bot selected in the Bot Selection Drop Down
- Class Config – Brings up the Combat Routine Configuration Window (if the one you have installed supports this feature) settings related to combat and class specific settings can be adjusted here.
- Plugins – Brings up the Plugin Window, from here you can see what plugins are currently installed, Enable or Disable them, and Configure them If they have a configuration window.
- Developer Tools – Brings up the Developer Utility Window, from here you can get information like your Current Location, Create Blackspots, Get a list of WoW Objects that are around you, this window contains tools for plugin and profile developers.
- Log Window – Displays what the bot is currently doing.
- Info Pane – by clicking the Info button this will switch the log window to the info pane, where you can get information like XP an Hour, Number of Kills, Current Objective and Time to Level.
- Start Button – Starts / Stops the bot

## The Settings & Tools Window

The Settings & Tools Window is where we find the more global settings for HonorBuddy like looting.

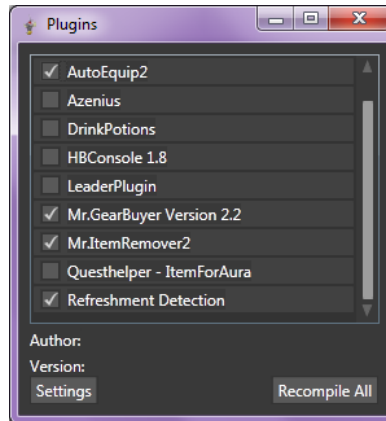


- Mount
  - Ground – this input will determine what Ground Mount is being used, you can type the Mount name or use the Mount (spell) ID to pick your mount manually.
  - Flying – This input will determine what Flying Mount is to be used, you can Type in the Mount name or use the Mount (spell) ID to pick your mount manually.
  - Random – Turning this On or OFF, Allows HonorBuddy to automatically find a new Random Mount to mount with every time rather than the ones you chose.
  - Automatic – Picks your Ground and Flying Mounts Automatically.
  - Mount Distance – The Distance (in yards) that if the bot needed to move is greater than what's set then it will mount to run that distance.
  - Use Native Flying – Allows the bot to Fly to Repair, Vender, or to Quest Pickups and Turn in's even if not supported by the quest profile. (Only Works in Certain Areas EX: Hellfire Peninsula)
- Meshes
  - Mesh Folder Path – Current location of where HonorBuddy is downloading and storing meshes downloaded from our navigation servers.
  - Change – Allows you to change the path where Mesh files are Stored.
- Vendors
  - Use Flight Paths – Tells the bot to Use Flight Paths when vendoring if the vendor is located far enough away to cut down on travel time.
  - Find Vendors Automatically – uses HonorBuddy's built in database of vendors to find NPC's that maybe closer but not listed in the current profile.
  - Drink Amount – Amount of Drinks to Buy and have on hand in case your character needs to rest.
  - Food Amount – Amount of Food to Buy and have on hand in case your character needs to rest.
- Mail & Refreshments

- Mail Recipient – the name of the character you want HonorBuddy to mail items to when your bags get full
  - Food Name – The Name or ID of the Health Restoring item you want your character to use during rest.
  - Drink Name – The Name or ID of the Mana Restoring Item you want your Character to use during rest.
- Looting
  - Loot mobs – Enables or Disables the looting of mobs.
  - Loot Chests – Enables or Disables the Looting of nearby Chests.
  - Skin Mobs – Enables or Disables Skinning Mobs if your skinning skill is high enough to do so.
  - Ninja – Enables or Disables Skinning All Nearby mobs regardless if you kill them or not.
  - Harvest Minerals – Tells the bot to Harvest nearby Nodes if your character is walking by them.
  - Harvest Herbs – Tells your bot to Harvest nearby Herbs if your character is walking by them.
  - Loot Radius – Tells the bot the maximum distance to look for Lootable or Harvestable Nodes or Objects.
- General
  - Kill Between Hotspots – Enables and Disables pulling mobs between hotspots when moving place to place.
  - Logout for Inactivity – allows the bot to logout of the game if inactive for a certain amount of time, such as getting while moving, or unable to complete the needed action to move.
  - Log Level – Tells the bot what to display in the Logging Window, you can disable writing to the log window by changing this setting to none.
- Developer Tools – Brings up the developer tools window (the same one available on the main HonorBuddy window)
- Plugins – Displays the Plugins configuration window. (the same one available on the main HonorBuddy window)
- Classes Config – Brings up the Combat Routines configuration window the current combat routine supports it. (the same one available on the main HonorBuddy window)
- Bot Config – brings up the current Bot Configuration Window that's selected from the bot selection Dropdown menu. (the same one available on the main HonorBuddy window)
- Save & Close – Saves all the current settings and Closes the Settings & Tools configuration window.

## The Plugins Window

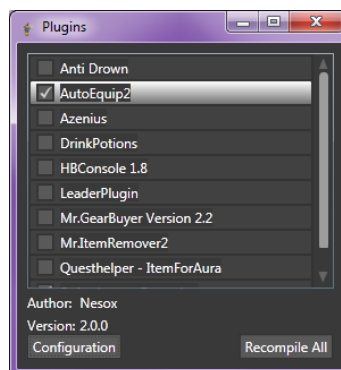
The plugins window lets you enable, disable or configure your currently installed plugins. Here we have a list of our currently installed plugins, and to the left is a checkbox that when checked, means the plugin is enabled.



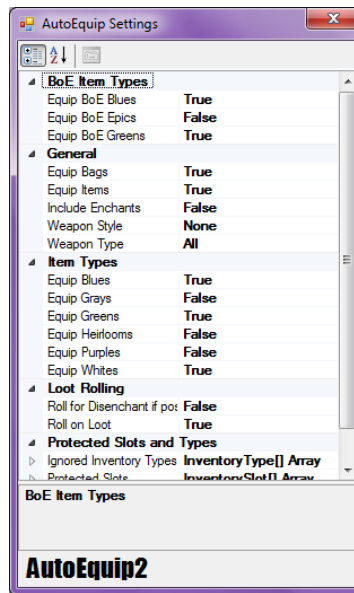
- Author – Name of the Plugin's Author
- Version – Version of the Currently Selected plugin.
- Settings – Brings up the plugins configuration window (if the currently selected plugin supports it)
- Recompile All – Recompiles all plugins that are currently installed, this is useful for development as you don't have to restart HonorBuddy completely for code changes to take effect.

## Plugin - AutoEquip2

AutoEquip2 is a plugin that allows HonorBuddy to equip better gear to your character as gets added to your inventory. AutoEquip2 also handles picking gear from quest rewards, and rolling on gear in instances. To configure AutoEquip2, you need to click on the plugins button from your main HonorBuddy window, or you're Settings & Tools Window.



Once the plugins window is open click on AutoEquip2 from the list and press the Configuration Button to bring up that plugins Configuration Window. From the configuration window we can change AutoEquip2's Settings.



- Equip BoE Blues – Allows AutoEquip2 to Equip Blue (Rare) Bind on Equip Gear that would be an upgrade for your character.
- Equip BoE Epics – Allows AutoEquip2 to Equip Epic (Purple) Bind on Equip Gear that would be an upgrade for your character
- Equip BoE Greens – Allows AutoEquip2 to Equip Green (Uncommon) Bind on Equip Gear that would be an upgrade for your character
- Equip Bags – Allows AutoEquip2 to Equip Bags that have more slots then the bag that's equipped with the least slots. Also Equip Bags if there is an Open Slot available to equip a bag.
- Equip Items - Allows AutoEquip2 to Equip Items on your character (Must be Enabled for AutoEquip2 to work)
- Include Enchants - Allows AutoEquip2 to Consider Enchantments when picking weapons to equip
- Weapon Style - Forces AutoEquip2 to equip only certain Styles of Weapons, if you wanted to force Auto Equip to Duel Wield instead of using a Two Handed Weapon, you would set that here.
- Weapon Type – Forces AutoEquip2 to only equip certain Kinds of weapons, such as if you only wanted to use Axes, Swords or Bows.
- Equip Blues – Allows AutoEquip2 to Equip Blue (Rare) Gear that would be an upgrade for your character.
- Equip Grays - Allows AutoEquip2 to Equip Gray (Poor) Gear that would be an upgrade for your character.
- Equip Greens - Allows AutoEquip2 to Equip Green (Uncommon) Gear that would be an upgrade for your character.
- Equip Heirlooms – Allows AutoEquip2 to Equip Heirloom (Light Gold) Gear that would be an upgrade for your character

- Equip Purples – Allows AutoEquip2 to Equip Epic (Purple) Gear that would be an upgrade for your character
- Equip Whites - Allows AutoEquip2 to Equip White (Common) Gear that would be an upgrade for your character.
- Roll for Disenchant if Possible – When loot pops up in an instance it will roll to disenchant regardless if it's an upgrade or not.
- Roll on loot – Allows AutoEquip2 to roll on loot that pops up during instances and when in a party.
- Ignore Inventory Types – allows you to set certain kinds of upgrades to ignore, such as trinkets or rings.
- Protected Slots – Allows you to tell AutoEquip2 what slots NEVER to equip inventory to.
- Replace Heirlooms – Allows AutoEquip2 to replace Already Equipped Heirloom Gear.

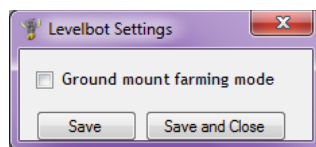
## Bot Mode – Grind

Grind Mode is allows you to kill (grind) on monsters by using a basic profile that has a set of hotspots that the bot follows, grind mode also allows ground mount harvesting of herbs and minerals.

To Use Grind mode you must first load up a Grind Mode profile, you can do this by clicking Load Profile, and finding the profile you want to use and selecting it.

## Grind Bot Configuration

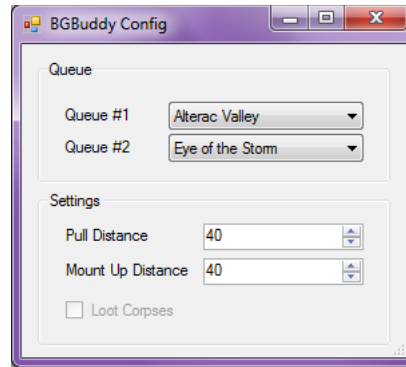
Like all bots its configuration page can be accessed by setting the dropdown menu to grind, and by pressing the “Bot Config” button ether from the Settings & Tools Window, or by checking “Enhanced Mode” and Clicking the “Bot Config” Button.



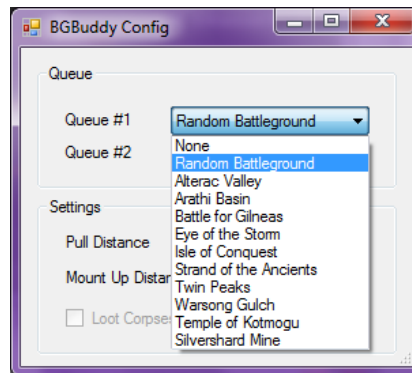
- Ground Mount Farming Mode – when enabled it allows the grind bot to ignore mobs that might attack it, and prevents mob pulling, to allow you to run harvest minerals or herbs without stopping for combat unless it reaches its destination.

## Bot Mode - Battlegrounds (BGBuddy)

BGBuddy allows your bot to queue and participate in battlegrounds to earn experience and honor points. BGBuddy will attack enemy players and play the objective to try and help your team win the round to earn more honor points, these objectives include and are not limited to (Moving to the Biggest Fight, Returning your teams flag, defending a flag carrier, assaulting enemy controlled bases, capturing enemy controlled bases, and killing unfriendly NPC's).



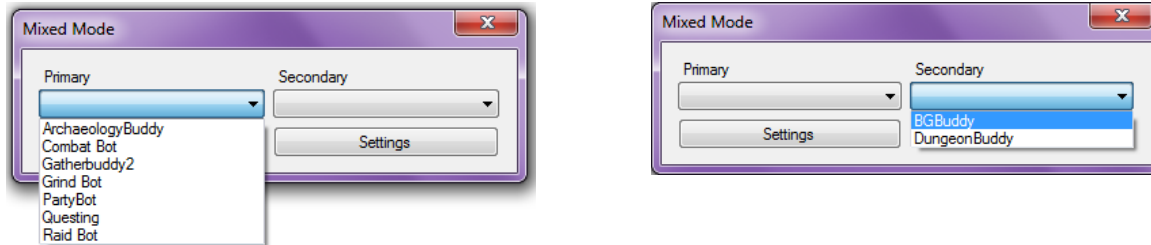
- Queue #1 – Sets the first battleground you wish to queue for.
- Queue #2 – Sets the second battleground you wish to queue for.
- Pull Distance – The max distance that HonorBuddy will consider passing a target to your combat routine to begin attacking or fighting back against a target.
- Mount Up Distance – the max distance that HonorBuddy will run on foot to, anything over the mount up distance, HonorBuddy will proceed to mount to get to the PoI (Point of Interest) faster.
- Loot Corpses – Allows HonorBuddy to try looting the corpses of enemy player to take their insignia and currency that drops when a player dies (this option is not available at this time)



By setting the Queue #1 dropdown we can select the first battleground you wish to queue for, you may set up to 2 specific battlegrounds at a time and you may ONLY queue for battlegrounds your character is eligible to queue up for, if it is not set correctly HonorBuddy will stand trying to queue for a battleground it cannot queue for, so it is important these settings (Queue #1 and #2 are set correctly).

## Mode – Mixed

Mixed Mode enables HonorBuddy to Run Multiple Modes at the same time. This allows us, while waiting for a battleground or a Dungeon, to grind on mobs, gather minerals and herbs, and even level our Archaeology skill.



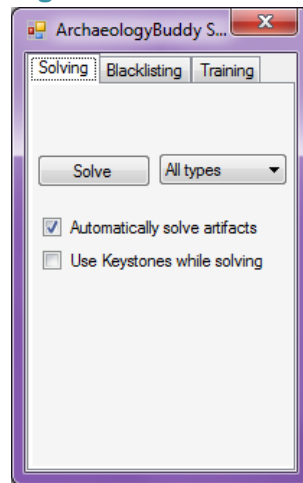
By Clicking “Bot Config” in the when mixed mode is selected we get a configuration window with 2 dropdown menus. Labeled (Primary and Secondary) in the primary dropdown we can select the mode we wish to run while our we wait for our Instance or BattleGround to be ready, once a Mode is selected we can configure that mode by clicking the Settings Button to bring up that modes configuration window (if it supports it) the same needs to be done in the Secondary Mode selection dropdown as well, both a primary and secondary mode need to be selected to use Mixed Mode. Once your two modes are selected, you need to load a profile appropriate the Mode selected in the Primary Mode dropdown menu, and your ready to start honorbuddy.

## Mode – Archelogy (ArchelogyBuddy)

Archelogy Mode, allows your character to level your archeology skill by Flying to each Digsite and use your Survey Skill to find Fragment containers and create Artifacts. To ArchaeologyBuddy you must learn the profession before starting HonorBuddy, it is also Reccamended your character be at least max level for the contient that you wish to use archaeology on, to prevent deaths from higher level mobs, and the fastest flying skill available to you, doing so will not only save you time but make leveling a lot faster. When starting ArchaeologyBuddy on a contient ArchaeologyBuddy will remain on that contient unless manually moved.

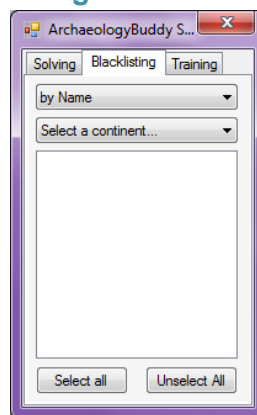
- Kalimdor – level 60
- Eastern Kingdoms – Level 60
- Outland – Level 70
- Nortrend – Level 80
- Pandaria – Level 95

## Archaeology Configuration – Solving



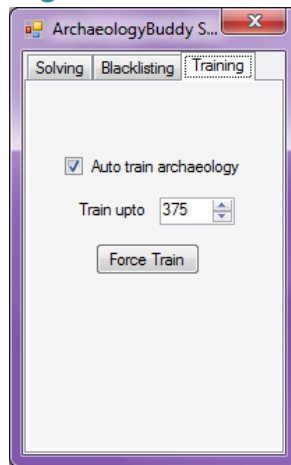
- Solve – Will execute the routine to solve fragments manually if you have enough fragments to solve any artifacts.
- Solve Type Dropdown – allows you to change what type of Fragments the Solve Button will try and solve.
- Automatically solve artifacts – Allows ArchaeologyBuddy to Automatically solve artifacts when enough fragments are selected.
- Use Keystones while solving – Allows the use of any collected keystones to speed up automatically solving artifacts.

## Archaeology Configuration – Blacklisting



- By Name Dropdown – brings up a list of digsites by name, and allows you to put a check by it, to blacklist that digsite. (please note: because World of Warcraft only allows 6 active digsites on your map active at any one time, its recommended you not blacklist more than 5 digsites or in the event all 6 blacklisted digsites are active ArchaeologyBuddy will just remain idle)
- Select a continent Dropdown – brings up a list of digsites by continent, to blacklist a site put a check by it.
- Select all – Allows you to check all of the digsites on the list.
- Unselect all – Allows you to uncheck all of the digsites on the list.

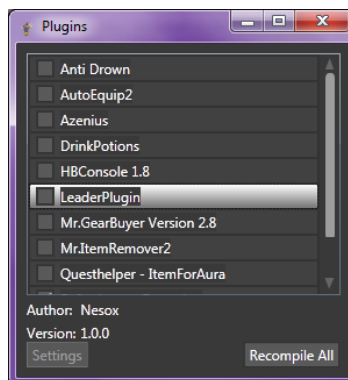
## Archaeology Configuration – Training



- Auto train Archaeology – Enables ArchaeologyBuddy to automatically train to level your Archaeology skill, enabling this will have your fly to the nearest trainer and buy the next level of your skill
- Train upto – Allows you to set the number to train your archaeology skill up to.
- Force Train – Forces HonorBuddy to train your Archaeology skill manually.

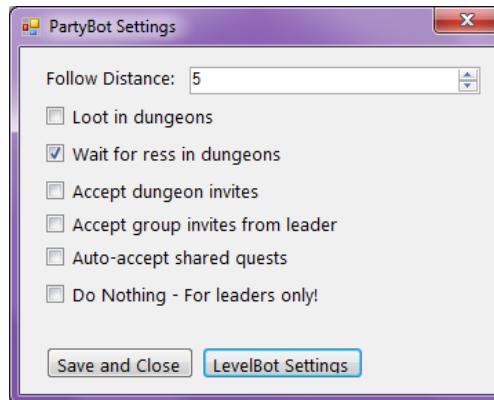
## Mode – PartyBot

PartyBot allows your Character to be run in a party with either a human leader or a bot leader, in order to provide support for running a party in Grind, Battleground, and DungeonBuddy Modes. All characters **MUST** be attached and running honorbuddy to use the partybot the leader must have the Leader Plugin Enabled. To do this, enable the plugin in your plugin configuration window.



Once the Leader Plugin is enabled you can now select the bot mode you wish to run, If you want to run a grinding profile, select “Grind” from the bot dropdown menu, and load a profile appropriate for your level. On the Followers, you need to change the mode selection dropdown to Party Mode, and load the same profile you loaded on your Leader. You can now, start your follower by pressing Start on the main HonorBuddy window, and you can start your leader, my pressing start on your Leader.

If you want to choose how your follower reacts behaves while following your leader around by pressing the Bot Config button on the main HonorBuddy window.



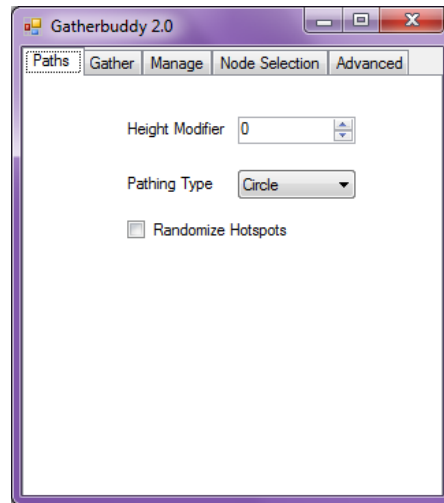
- Follow Distance – Changes the distance that your follower will stay behind the Leader.
- Loot in dungeons – Enables the follower to gather from lootable mobs while in a dungeon
- Wait for Ress in Dungeons – Waits for the leader or another party member to resurrect the follower if it dies.
- Accept Dungeon Invites – Accepts Dungeon invites if the event occurs.
- Auto-Accept shared Quests – Accepts quests shared to it by party members.
- Do Nothing – Allows the bot to sit and do nothing, if you wanted to play by hand and have your followers assist, then you would use this option.
- LevelBot Settings – Brings up the Grind Mode configuration window.
- Save and Close – Saves the current configuration settings and closes the configuration window.

## Mode – Gathering (GatherBuddy2)

GatherBuddy allows your character to Gather both herbs and minerals by using a set path set in your GatherBuddy profile, and flying along it, till an allowed herb, or mineral is found. Once a proper herb or mineral is found GaterBuddy will fly down and harvest it, mount back up, and fly back along the path, till a new Herb or Mineral is found.

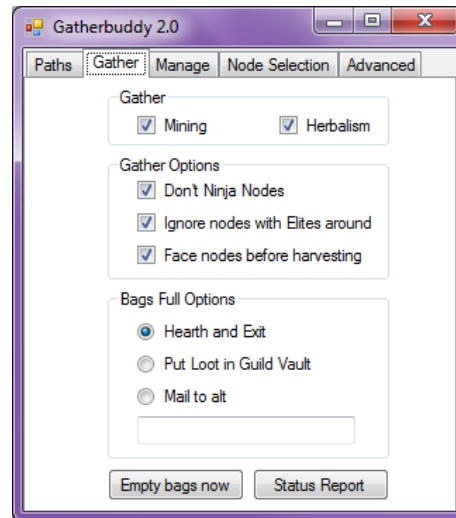
To use gatherbuddy a compatible gatherbuddy profile is required, and must be loaded by pressing the “Load Profile” button in HonorBuddy to finding the profile (.XML File) and opening it to load the profile. Also make sure the “Flying Mount” input is filled in with the mount you wish to use in your honorbuddy settings.

## Gathering (GatherBuddy2) Configuration – Paths



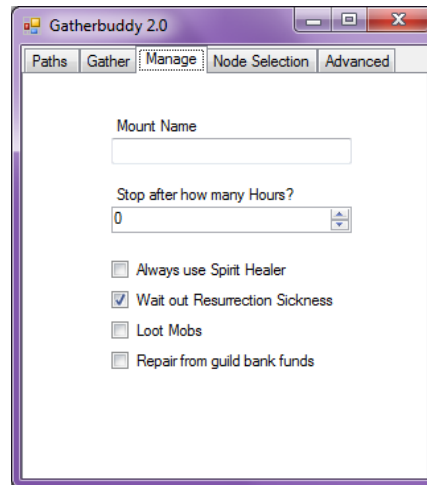
- Height Modifier – Allows you to OFFSET to the default height that the bot will fly when moving from hotspot to hotspot. If a profile created a route 'too high', you can lower it by providing a negative value here. If the route was created 'too low', a positive value will raise it.
- Pathing Type – Sets the type of Pathing that the bot will take from hotspot to hotspot.
  - Circle – Runs the hotspots in order to complete a circuit around a area
  - Bounce – flies the route from beginning to end, then reverses the route and returns by using end to beginning.
- Randomize Hotspots - examines all the Hotspots defined in the profile, and selects a random one as the 'starting point'. From there, the route will either be followed as defined in the Pathing Type (Circle, or Bounce).

## Gathering (GatherBuddy2) Configuration – Gather



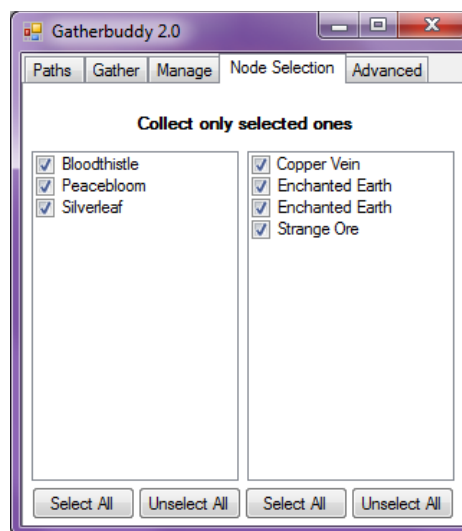
- Mining – Allows your bot to harvest minerals if the Mining skill is learned on your character. If the mining skill is unknown, it is harmless to leave this checked; however, Gatherbuddy will waste computer resources evaluating nodes that cannot be gathered
- Herbalism - Allows your bot to harvest herbs if the Herbalism skill is learned on your character. If the herbalism skill is unknown, it is harmless to leave this checked; however, Gatherbuddy will waste computer resources evaluating nodes that cannot be gathered
- Don't Ninja Nodes – Prevents the bot from harvesting nodes that another player is standing near.
- Ignore nodes with Elites around – enables the bot to ignore nodes that are highrisk for getting into a fight with an elite mob.
- Face nodes before harvesting – Faces the node before gathering it.
- Hearth and Exit – On Bags full the bot will use your hearthstone, then exit the game.
- Put loot in guild vault – allows the bot to fly to a guildbank if one is available on your continent and deposits the contents of your bags into the guildbank. After its complete the bot will continue to gather nodes.
- Mail to alt – allows the bot to fly to the nearest mailbox and mail the contents of your bag to the character whose name is given in the box.
- Empty bags now – forced the bot to make a Bags full run, even if your bags are not full.
- Status Report – EMITS THE CURRENT HARVESTING STATISTICS to the Honorbuddy log window. These statistics are reset each time you start honorbuddy?

## Gathering (GatherBuddy2) Configuration – Manage



- Mount Name – Input for the name of your preferred flying mount.
- Stop after how many Hours? – Allows the bot to stop gathering after X many hours has passed.
- Always use Spirit Healer – After dying, use the spirit healer to resurrect.
- Wait out Resurrection Sickness – Wait out resurrection sickness if it exists.
- Loot Mobs – Loot Mobs that are killed while harvesting nodes.
- Repair from guild bank funds – will attempt to repair using guildbank funds instead of gold on hand.

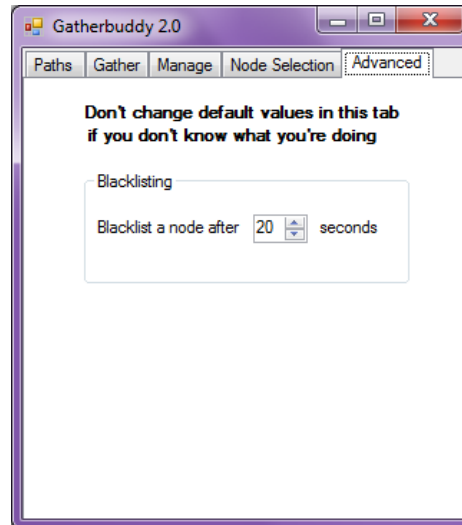
## Gathering (GatherBuddy2) Configuration – Node Selection



The Node Selection tab consists of 2 list windows, that show what minerals and herbs your able to collect all the nodes that are selected will be harvested, if you do not wish to harvest a particular node, you can uncheck it, and Gatherbuddy2 will ignore it while harvesting.

## Gathering (GatherBuddy2) Configuration – Advanced

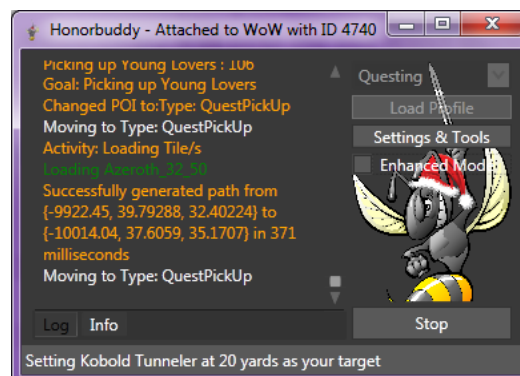
The advanced tab has options that pertain to blacklisting. If the bot has problems harvesting a node, it will auto-blacklist the node. The blacklist remains in memory only, and will not persist across launches of honorbuddy. This setting determines how long gatherbuddy should try to harvest the node, before the node is deemed problematic and blacklisted.



## Mode – Questing

HonorBuddy in questing mode allows HonorBuddy to level your character by Picking up and completing quests. To use Questing mode you need to set the mode dropdown menu to questing, then a questing profile is required, and must be loaded by pressing the “Load Profile” button in HonorBuddy to finding the profile (.XML File) and opening it to load the profile.

It is extremely important that you have the AutoEquip2 plugin Enabled and configured correctly, as AutoEquip2 will help the bot select quest reward appropriate to your character and stat requirements and that your character is in the location where the quest profile begins.

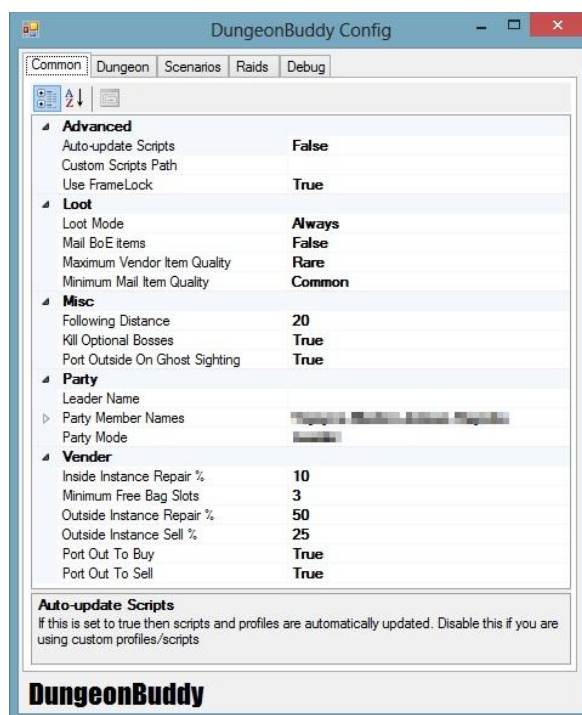


## Mode – Combat Bot

The Combat Bot Mode allows you to play WoW by hand controlling movement and doing whatever you like, but allows HonorBuddy to Step in and handle your characters combat rotations while in combat. To use the Combat Bot, change the Mode Dropdown to Combat Bot, and Press Start. While the bot is running HonorBuddy will sit idle and wait for you to enter combat, once combat has begun, HonorBuddy will kill the mob as it would if it was trying to kill the mob in grind mode. During combat you may not have control of your characters movement, since the combat bot does not disable movement during combat. To disable movement during combat you need a combat routine that supports this feature, and can be set via the Bot Configuration Page.

## Mode - Dungeons (DungeonBuddy)

The Dungeons Mode allows your character to use the dungeon finder system and run dungeons for experience, loot, and rewards. To use DungeonBuddy change the Bot Mode Dropdown menu to DungeonBuddy. Once DungeonBuddy is selected you will want to configure it by selecting Bot Config to access the modes Configuration window.



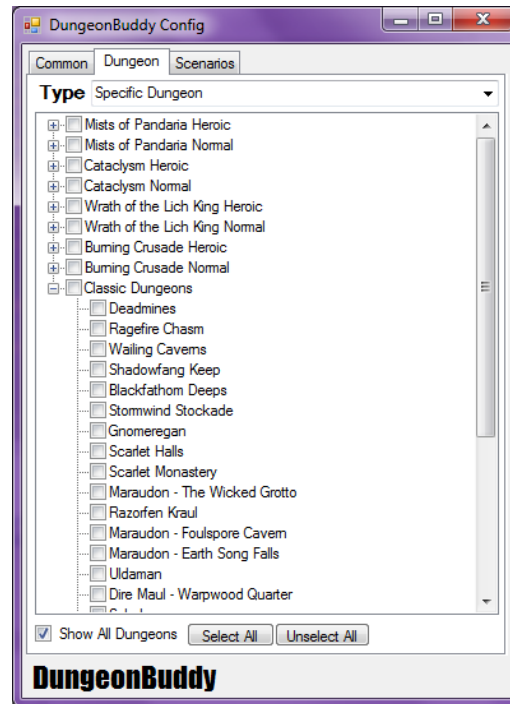
- Auto-update Scripts – Allows DungeonBuddy to look for and update dungeon scripts if a newer version exists.
- Custom Scripts Path – the directory where your custom dungeon scripts are stored if you have any.
- Use FrameLock – Allows DungeonBuddy to force the combat routine to run in a framelock. FrameLocks will offer speed improvements to most combat routines, but doing so may also cause frame rate drops.
- Loot Mode – Changes how Dungeon Buddy handles lootable corpses in side of the dungeon.

- Mail BoE Items – Enables Mailing of Bind on Equip Items looted from bosses and mobs from the dungeons you are running.
- Maximum Vendor Item Quality – Sets the highest rarity of items to sell to a vendor.
- Minimum Mail Item Quality – set the minimum quality of bind on equip items to mail.
- Follow Distance – sets the max distance the tank is allowed before your character will start following.
- Kill Optimal Bosses – forces dungeonbuddy to take non-essential bosses into account before a dungeon is considered complete.
- Leader Name – allows you to set the name of your party leader if you are in a party.
- Party Member Names – Allows you to set the names of the other people in your party to keep your party together.
- Party Mode – Allows you to Set if you are running a party and if so the position your character is in the party.
- Inside Instance Repair % - Lowest durability percent before repairing while inside an instance.
- Outside Instance Repair % - Lowest durability percent before repairing while not in an instance.
- Minimum free bag slots – sets the number of bagslots left needed to initiate a vendor run.
- Outside Instance Sell % - While outside of any instance bot will sell when bot's free bag slots is less than [Minimum Free Bag Slots] + [This Value] percent of [Total Number of Bag slots]
- Port Out to Sell – Toggles if bot should port out during an instance run to sell when bags are nearly full.
- Port Out to Buy - Toggles if bot should port out during an instance run to buy drinks when completely out of drinks and is a mana user.

## DungeonBuddy Configuration – Dungeons

In this tab you will find settings related to what dungeons are being queued for and what ones will be ran.

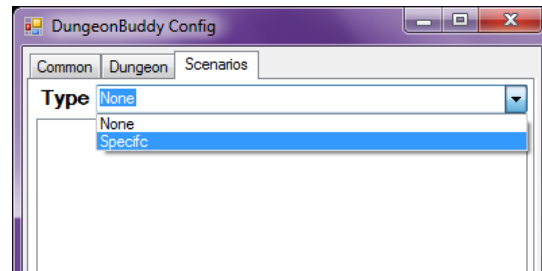
In the dungeon list you can select what dungeons that Dungeon buddy is allowed to queue for by putting a check next to the ones you want it to queue for while the Type is set to Specific Dungeon.



- Type – Allows you to set what Type or Way you're going to run dungeons
  - None – No Dungeon Queuing will be performed.
  - Farm – Allows you to farm dungeons without queuing for them, (IE Running into the instance)
  - Specific Dungeons – Allows you to select only specific dungeons to queue for. (recommended)
  - Random – Allow you to queue from Random Dungeons.

## DungeonBuddy Configuration – Scenarios

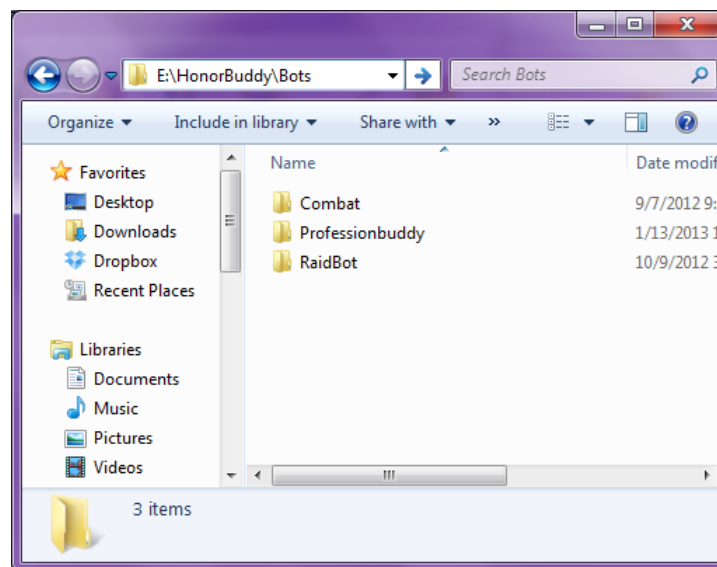
The Scenarios tab contains settings related to scenarios at level 85+



- None – turns off Queuing for Scenarios (no scenarios will be queue for)
- Specific – Allows you to set specific Scenarios to queue for, by selecting what ones you wish to queue for in the selection window.

## Mode – Professions (ProfessionBuddy)

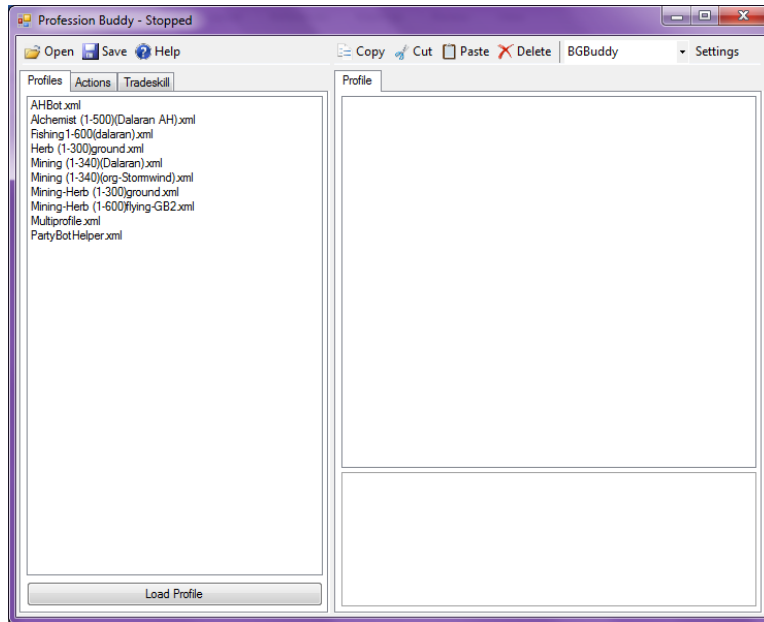
ProfessionBuddy is a mode for HonorBuddy that runs for custom code in profiles to allow for things like automatic profession skill leveling, and fully automated farming. The latest version of ProfessionBuddy can be downloaded from [HERE](#). Once you have the professionbuddy zip file downloaded, you need to extract its contents to your Honorbuddy's Bots folder. Once its extracted to your Bots Folder, you're ready to start HonorBuddy.



To Use ProfessionBuddy select ProfessionBuddy from the Mode selection dropdown and load a ProfessionBuddy Profile that is appropriate for your character.

## ProfessionBuddy Configuration – Overview

To Open the ProfessionBuddy configuration window, press the Bot Config button on your main HonorBuddy window, or by pressing the Bot Config, button in the Settings & Tools window.



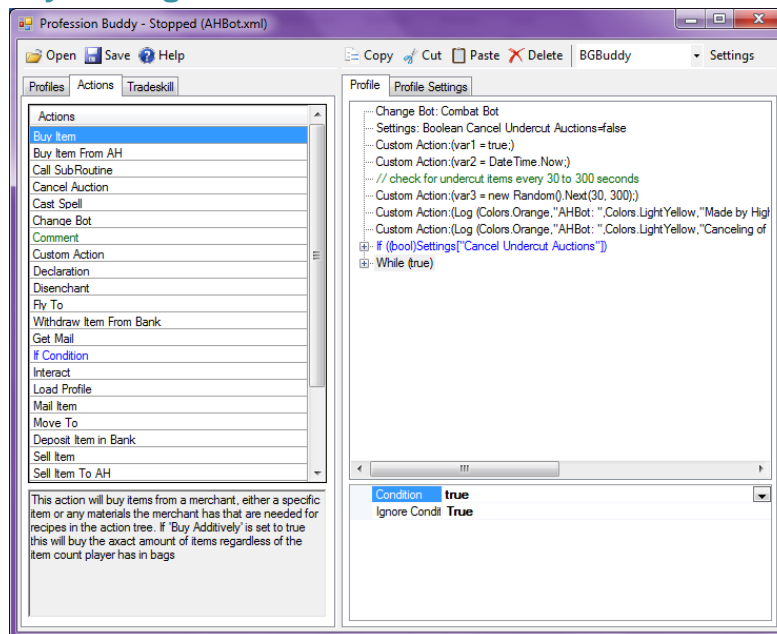
- Open – Allows you to browse and find a profile on your local machine to load.
- Save – Allows you to save the already open profile, if modified by the built in profile editor.
- Help – brings up the help window, here you will find information on programming, usage, and API.
- Cut – Cuts the Currently selected lines from the profile panel.
- Copy – Copies the Currently selected lines from the profile panel.
- Paste – Pastes the Currently selected lines from the profile panel.
- Delete – Deletes the Currently selected lines from the profile panel.
- Mode Selection Dropdown – Selects the secondary bot mode that professionbuddy will use, unless one is defined in the profile.
- Settings – brings up the bot configuration page of the bot selected in the mode selection dropdown.

## ProfessionBuddy Configuration – Profile

The Profiles tab has a list of quick load profiles this list is populated from profiles the Profiles Folder inside your professionbuddy folder. HonorBuddy\Bots\Professionbuddy\Profiles\ to load a profile from this list, click it and click the Load Profile button.

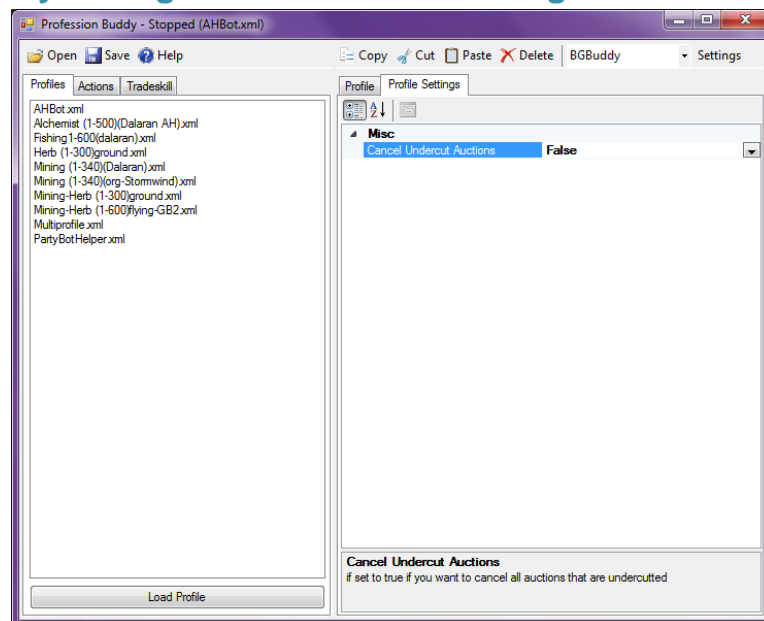
Once a profile has been loaded the code will show up on the right Profile Tab, from here you can change and edit the currently loaded profile by clicking the line you wish to edit, and editing the options in the bottom pane.

## ProfessionBuddy Configuration – Actions



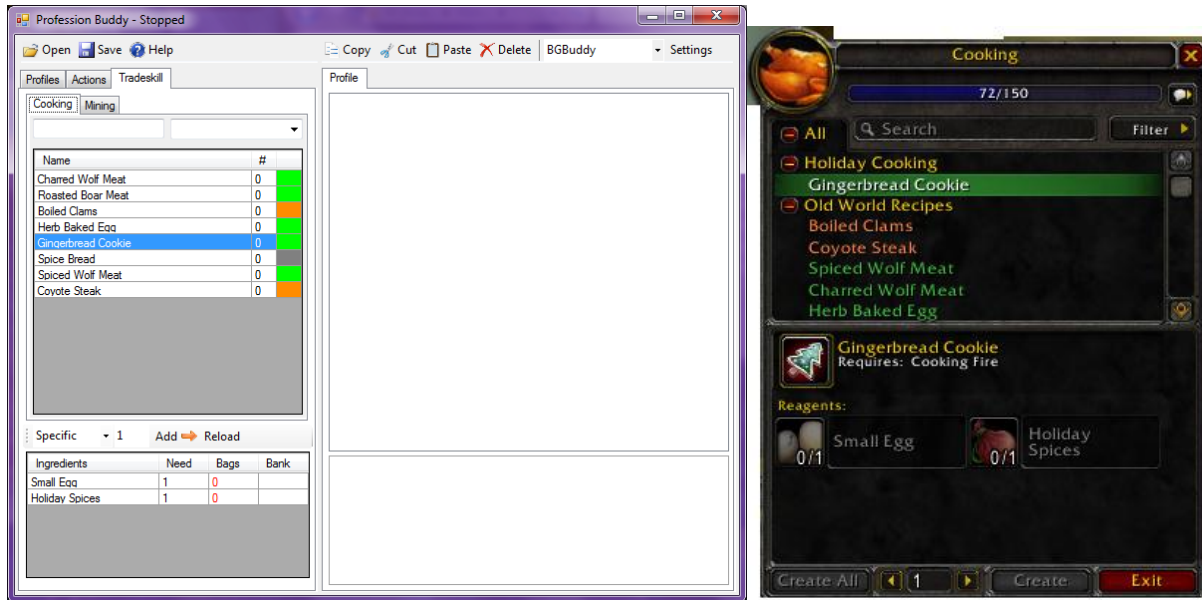
The Actions tab has a list of predefined actions that can be added to a profile, to add an action drag the action from the Actions Tab to the Profile Panel on the right, once the action has been added you can change the action by using pane located under the profiles panel.

## ProfessionBuddy Configuration – Profile Settings



If a professionbuddy profile has settings you can adjust, a new tab will show up called Profile Settings from here you can change the settings the profile will use.

## ProfessionBuddy Configuration – TradeSkill



This Tab contains all your current tradeskills and all the learned recipes you bot has learned. There's a search filter text box to the upper left corner and a drop-down list of Categories to the upper right.

The list has 3 different columns, Name, recipe repeatable count, and color representing the recipes difficulty. This list supports multiple selection which makes it easy to add allot of recipes to the Task list. To add the Recipes to the Task List you need to select them and then click the 'Add' button that is below the list. To the left of the 'Add' button is a numeric value that represents the number of times the recipes will be repeated when added to the Task list.

To the right of the 'Add' button is a drop down list with different modes that will alter the recipe's repeat behavior. The 1st and default mode, '*Specific*' will attempt to repeat the recipe the specified number of times.

The second mode '*Craftable*' will repeat the recipe until it runs out of mats.

The third and final mode '*Banker*' is only available if the user has an addon called DataStore installed. It's available on Curse gaming and comes with that Altaholic Addon. It basically keeps track of inventory, auctions, mail and bank items for all your characters, and even has multiple account support. This mode is nice to restock your bankers with crafted goods to sell on AH for example. It checks to see how many of the crafted items you have on your alts and then it deducts the '*Repeat*' amount from it. For example if you had 12 Flask of Steelskin on your alts and your '*Repeat*' number is 20 it would makes 8 flasks. (20-12 =8).

## **Special Thanks**

Highvoltz

Bambam922

ChinaJade

Touch

Natfoth

Conetopia